

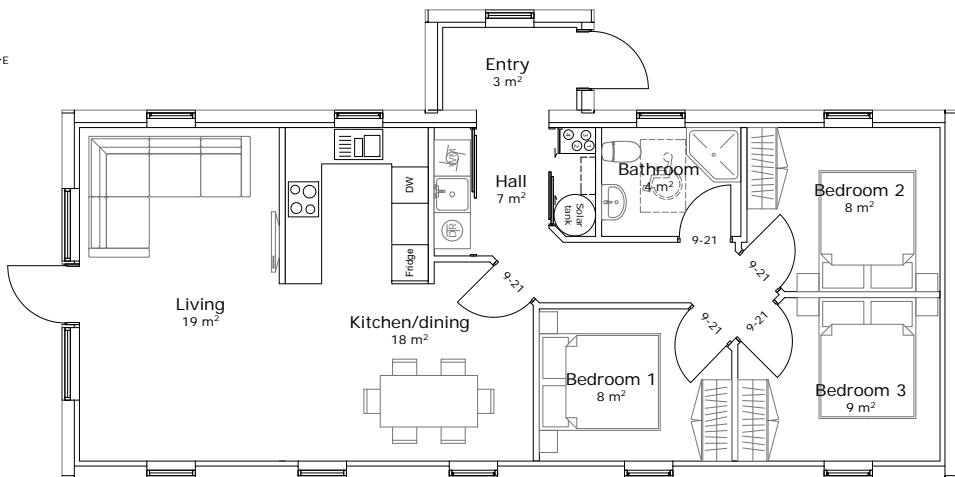
# SCANDINAVIAN HOMES

## Atlantica 82/35

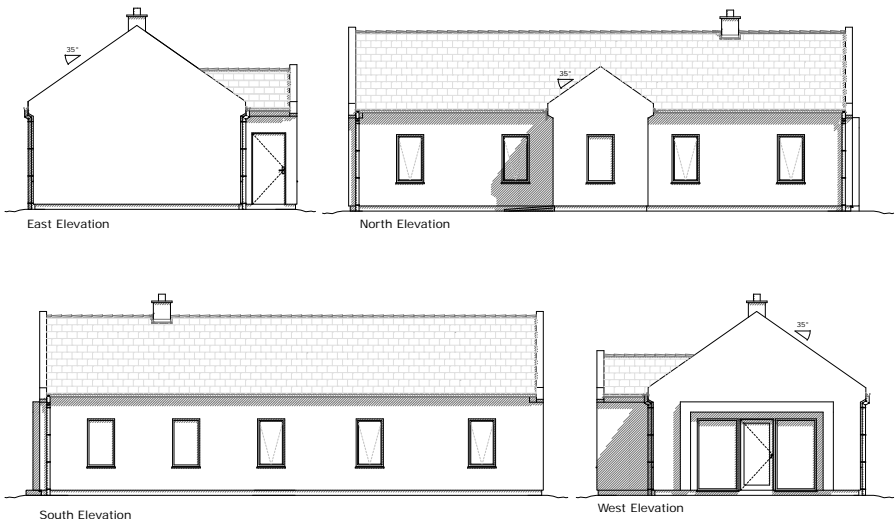
79m<sup>2</sup>  
(Gross Internal Area)

wall insulation	u-values	roof insulation	u-values
<input type="checkbox"/> 145mm	(0.23 W/m <sup>2</sup> K)	<input type="checkbox"/> 400mm (slope)	(0.10 W/m <sup>2</sup> K)
<input type="checkbox"/> 145+70mm	(0.15 W/m <sup>2</sup> K)	<input type="checkbox"/> 500mm (slope)	(0.08 W/m <sup>2</sup> K)
<input type="checkbox"/> 145+120+70mm	(0.10 W/m <sup>2</sup> K)	<input type="checkbox"/> 600mm (flat)	(0.06 W/m <sup>2</sup> K)

NOT TO SCALE



Internal dimensions: 5.5 m x 14.2 m  
External dimensions: 6.1 m x 14.8 m



This Atlantica example is designed as single storey but has a roof pitch of 35°.

It contains barged gables making it fit perfectly into the Irish landscape. The 'shadow box' around the South facing windows generate shadow that normally a roof overhang would give. This also helps to prevent the house from overheating in summer.

The design allows for 3 bedrooms.