

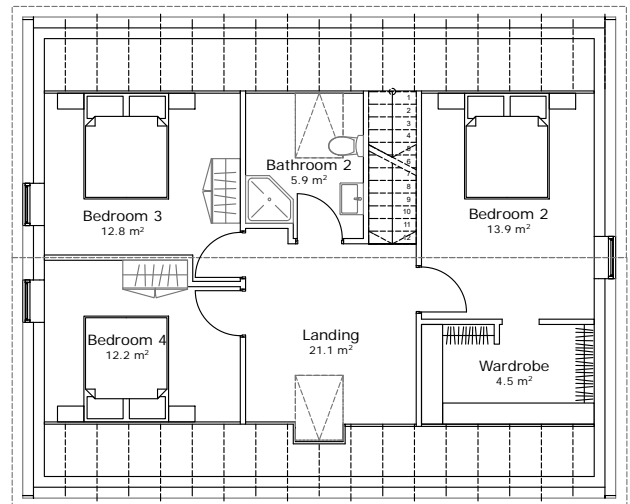
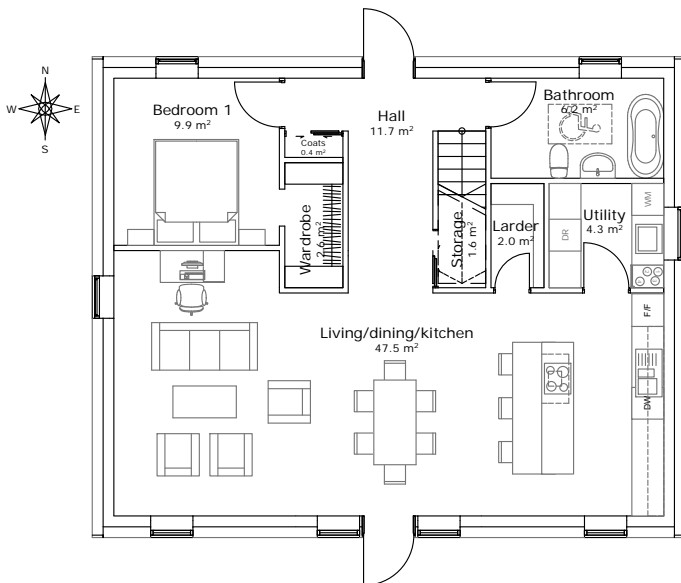
# SCANDINAVIAN HOMES

Nordica 094/40

151m<sup>2</sup>  
(Gross Internal Area)

wall insulation	u-values	roof insulation	u-values
<input type="checkbox"/> 145mm	(0.23 W/m <sup>2</sup> K)	<input type="checkbox"/> 400mm (slope)	(0.10 W/m <sup>2</sup> K)
<input type="checkbox"/> 145+70mm	(0.15 W/m <sup>2</sup> K)	<input type="checkbox"/> 500mm (slope)	(0.08 W/m <sup>2</sup> K)
<input type="checkbox"/> 145+120+70mm	(0.10 W/m <sup>2</sup> K)	<input type="checkbox"/> 600mm (flat)	(0.06 W/m <sup>2</sup> K)

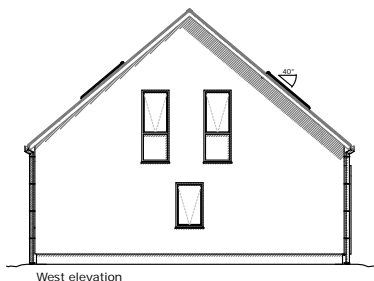
NOT TO SCALE



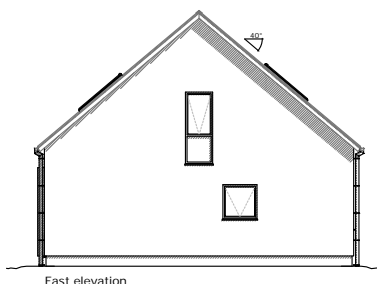
Internal dimensions: 8.5 m x 10.6 m  
External dimensions: 9.1 m x 11.2 m

This is our best selling house model. Since our first construction in 1993 we built nearly 60 of this type in all sort of variations. Due to its good wall to floor area ratio this is an ideal size for passive performance.

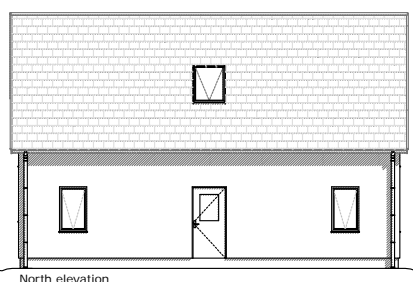
This featured design allows for 4 bedrooms.



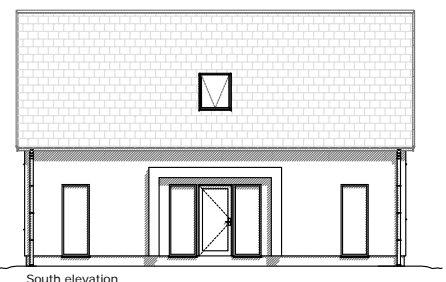
West elevation



East elevation



North elevation



South elevation