

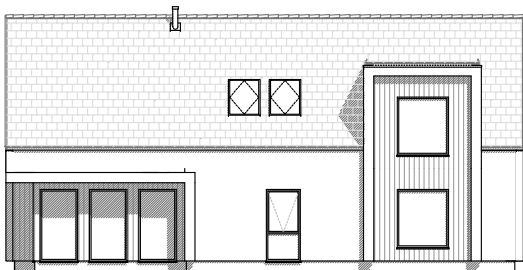
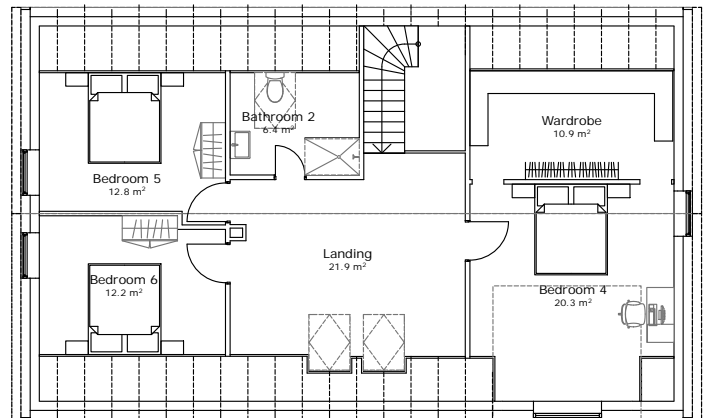
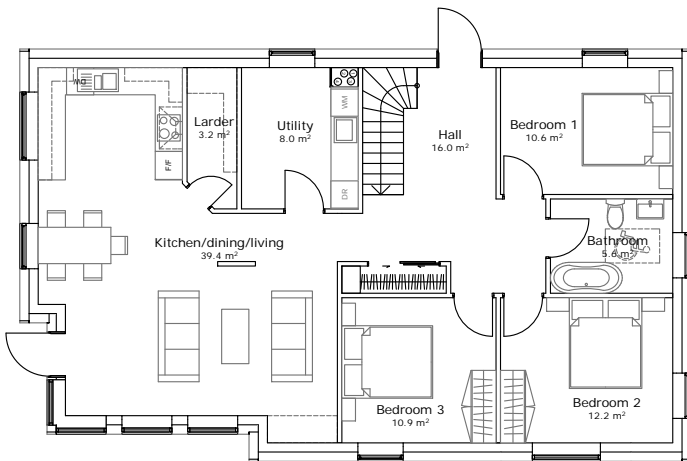
SCANDINAVIAN HOMES

Nordica 125/40

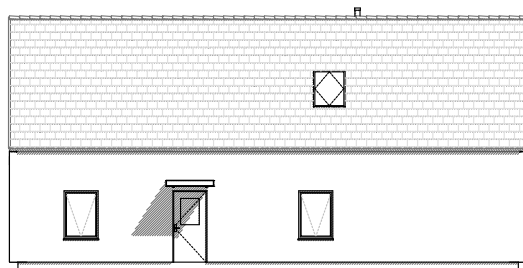
198m²
(Gross Internal Area)

wall insulation	u-values	roof insulation	u-values
□ 145mm	(0.23 W/m ² K)	□ 400mm (slope)	(0.10 W/m ² K)
□ 145+70mm	(0.15 W/m ² K)	□ 500mm (slope)	(0.08 W/m ² K)
□ 145+120+70mm	(0.10 W/m ² K)	□ 600mm (flat)	(0.06 W/m ² K)

NOT TO SCALE



South elevation

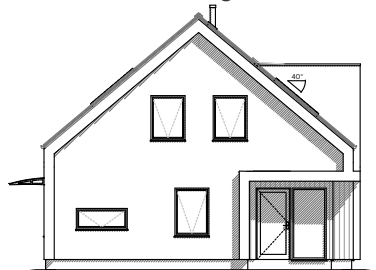


North elevation

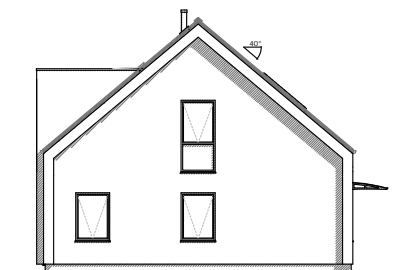
Internal dimensions: 8.5 m x 14.2 m
External dimensions: 9.1 m x 14.8 m

This is our latest and most contemporary design. It has also been a widely popular model. With over 20 built this is ideal for larger families. This version has 'extruded gable ends' to give shading to the gable end walls. The large glazing area in the living room is framed by a 'shading box'. The master bedroom upstairs has a dormer window feature that increases the quality of the room dramatically.

This featured design allows for 6 bedrooms.



West elevation



East elevation