

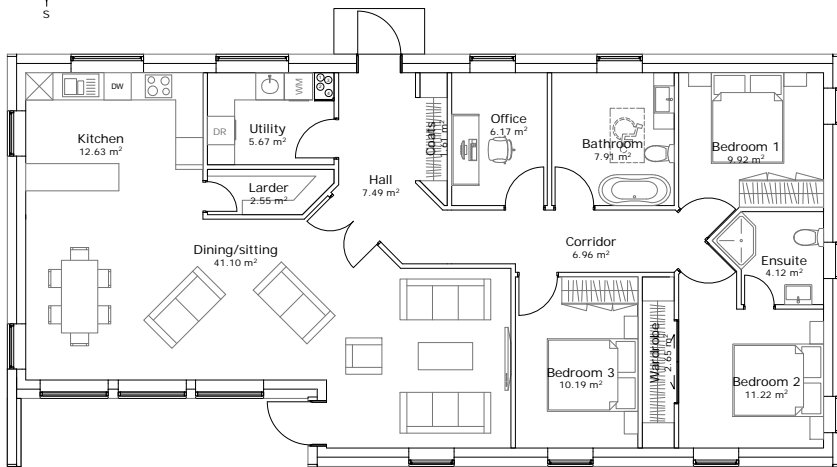
SCANDINAVIAN HOMES

Nordica 156/35

136m²
(Gross Internal Area)

wall insulation	u-values	roof insulation	u-values
<input type="checkbox"/> 145mm	(0.23 W/m ² K)	<input type="checkbox"/> 400mm (slope)	(0.10 W/m ² K)
<input type="checkbox"/> 145+70mm	(0.15 W/m ² K)	<input type="checkbox"/> 500mm (slope)	(0.08 W/m ² K)
<input type="checkbox"/> 145+120+70mm	(0.10 W/m ² K)	<input type="checkbox"/> 600mm (flat)	(0.06 W/m ² K)

NOT TO SCALE



Internal dimensions: 8.5 m x 17.8 m
External dimensions: 9.1 m x 18.4 m

This large single storey house with a 35° roof pitch contains an open plan kitchen-dining-living area with generous full height glazing. The extra deep set-back not only provides good shading in summer but also makes for a nice outside sitting area, especially with an attached deck.

This featured design allows for 3 bedrooms plus an office/study.

