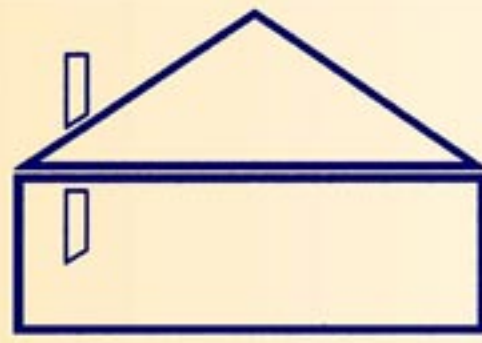


**SCANDINAVIAN
HOMES LTD.**

THE PASSIVE HOUSE



HOUSES HEATED WITH BODY HEAT



SCANDINAVIAN HOMES LTD.



Building materials are put into place first



A crane lifts the wall segments from the trailer



Double-trusses for 'passive roofs'



All wall parts are carefully lifted into place

Criteria for a Passive House *per m2 living area*

- * Max 10W/m² constant heat-loading
- * Max 15kWh/m²/yr annual space heat requirement
- * Max 42kWh/m²/yr annual total amount of energy input
- * Max 120kWh/m²/yr total energy requirement for space-heating, hot water and household electricity

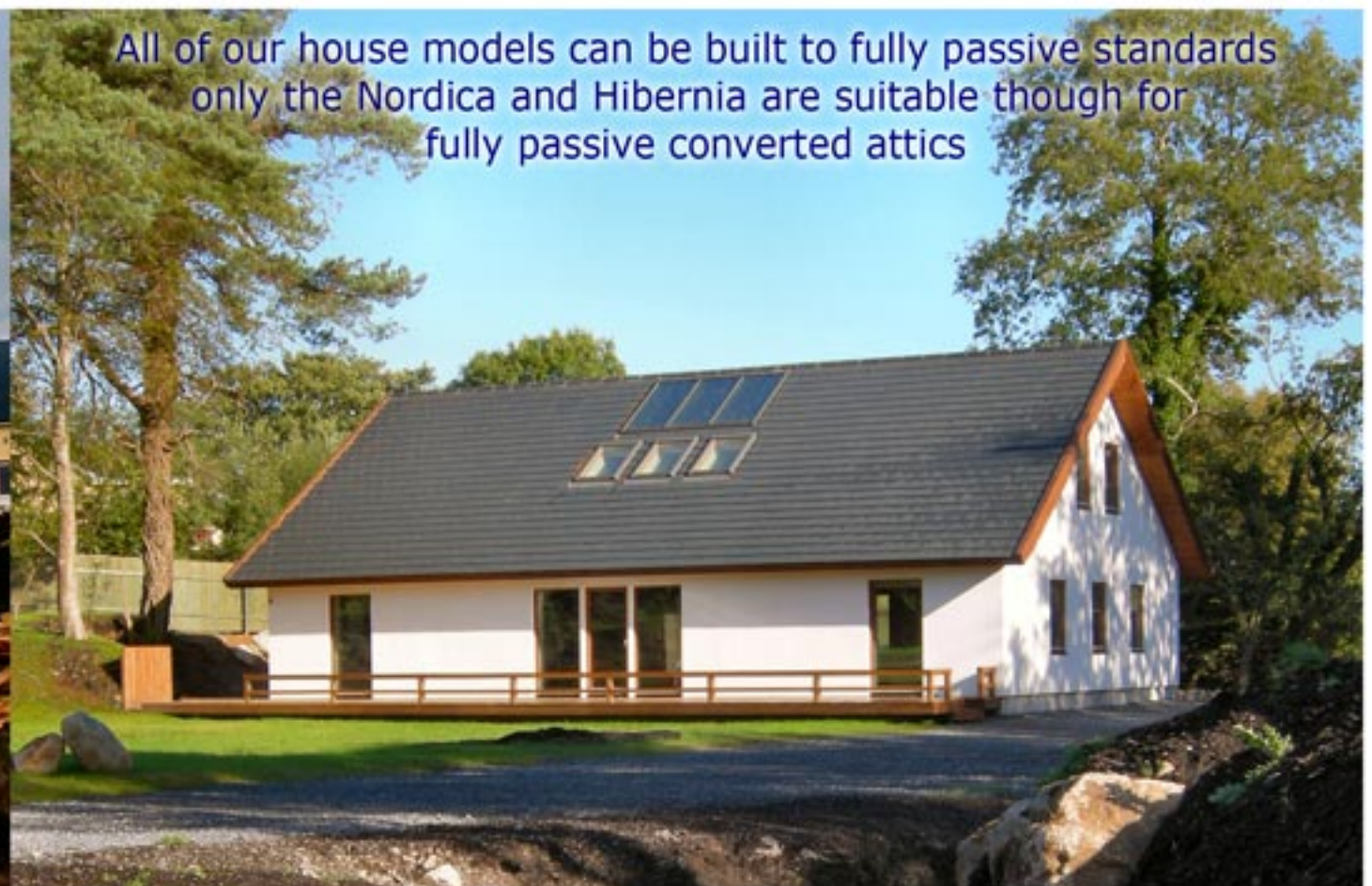


At the end of day 1 all walls and roof trusses are installed

The traditional shape of house is suitable for passive specification especially in one-storey versions

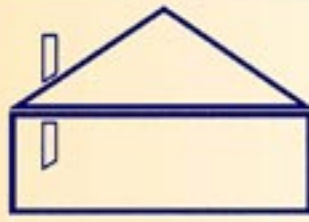


All of our house models can be built to fully passive standards only the Nordica and Hibernia are suitable though for fully passive converted attics



A frame with an extra glass can be added to standard roof velux windows to reduce heatloss



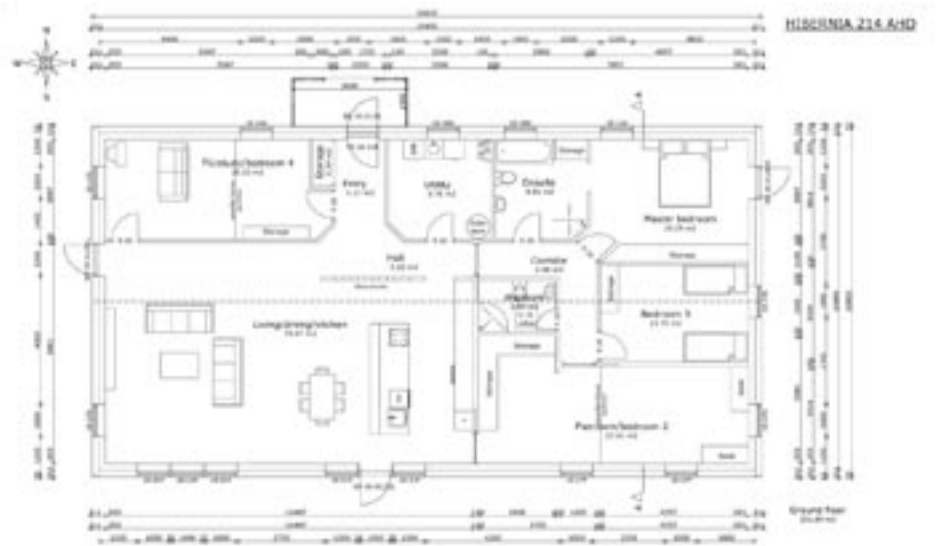


SCANDINAVIAN HOMES LTD.

Visualisation and Construction of a Passive House in Co.Laois



Visualisation and Construction of a 'Super Passive House' in Limerick



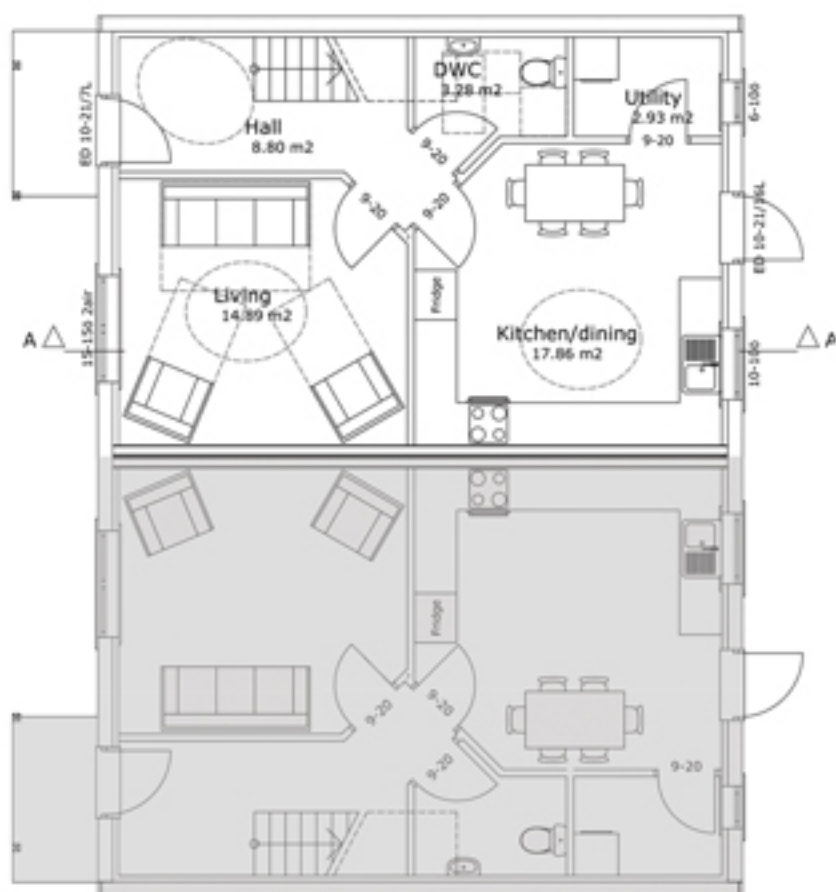
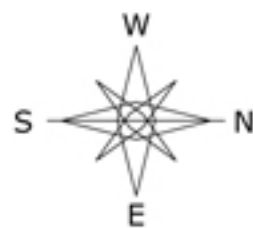
Stockholm 104, Two passive townhouses near Cambridge, England, for Saffron Housing Trust



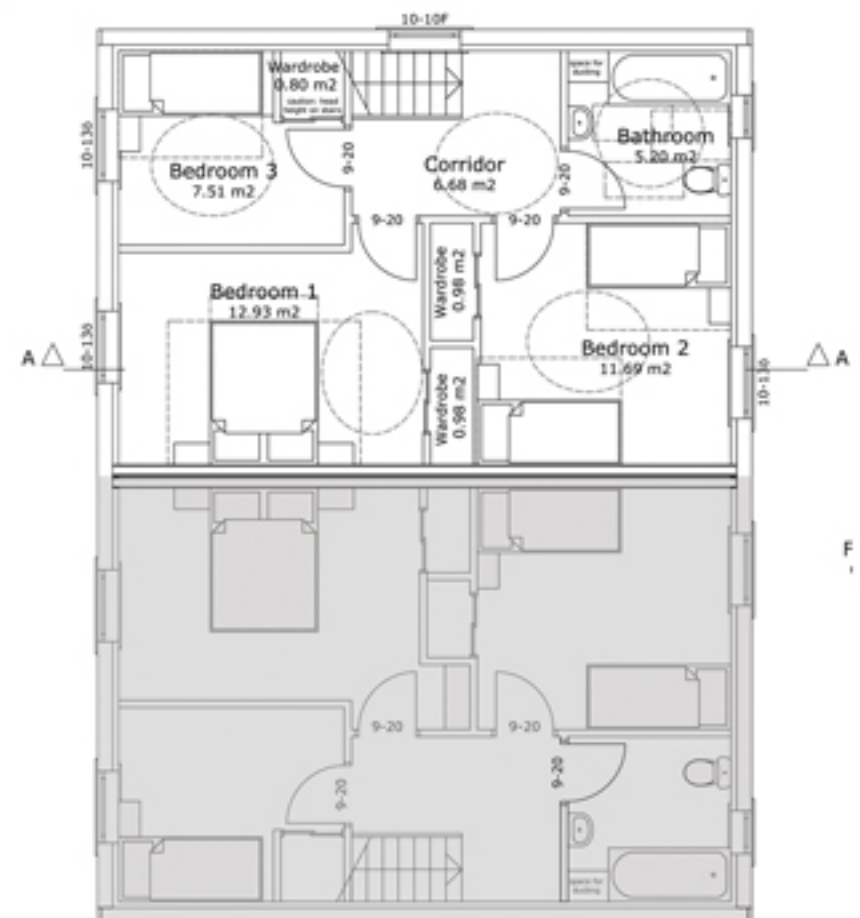
Perspective views



alternative options and studies for social housing in the UK and Ireland



Ground floor plan



First floor plan