



SCANDINAVIAN  
HOMES

# 0-energy passive house with seasonal store of solar heat

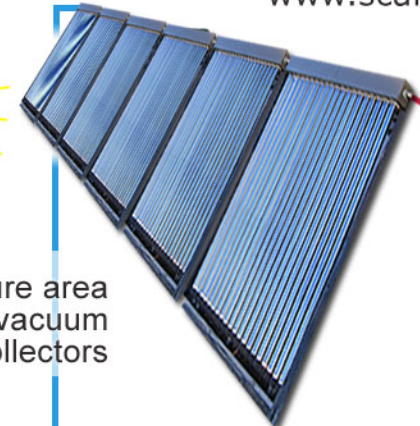
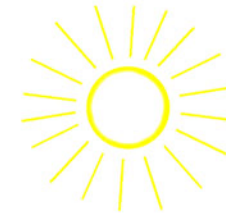
www.scanhome.ie



Integrated  
controller for  
solar circuits

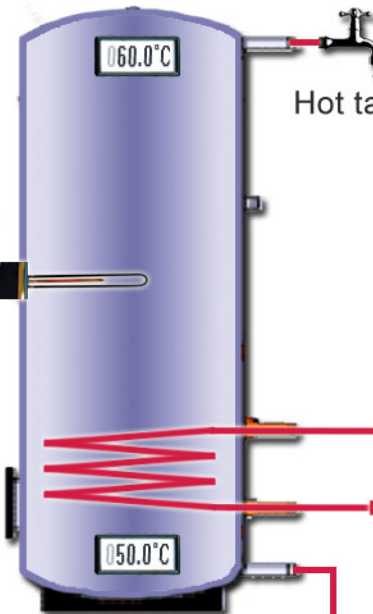


Immersion  
heater



110.0°C

6x1.8m<sup>2</sup> aperture area  
= 10.8m<sup>2</sup> vacuum  
u-tubes collectors



Tank 1: 300lit

60.0°C

50.0°C

Hot tap water

VEAB duct heater



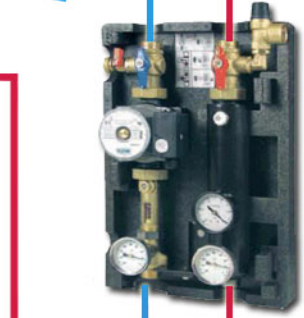
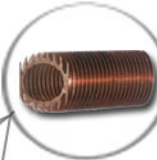
Manifold

Shunt valve

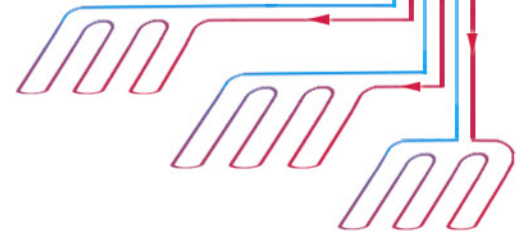


Pump

22mm finned  
copper pipe

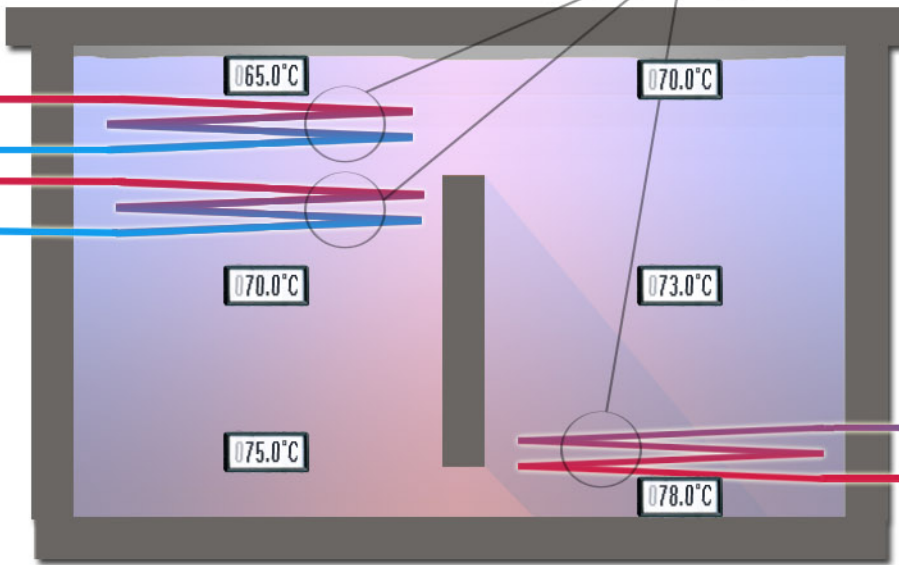


3-way valve



3 x 50m PEX floorheat pipes

Mains water supply



Tank 2: 23,000lit tank for solar heat storage

65.0°C

70.0°C

70.0°C

73.0°C

75.0°C

78.0°C

Flow meter

