

SCANDINAVIAN HOMES LTD.

House catalogue

2025/2026



Version: Can2025/2026/25.11.16/Friday, 12 September 2025

All types and styles can be mixed, ask us for more plans and images.
Visit our website for more ideas: www.scanhome.ie



Concept

An energy efficient house functions as a system. When all parts of the system are designed to be compatible, each operates more effectively and efficiently. In a house with a leaky building envelope, neither the insulation nor a well designed and installed ventilation and heat-recovery system will function advantageously. Similarly, a building with a very tight envelope will not be energy efficient without sufficient insulation of the walls, windows, floors and roof.



Ventilation & Heating

A constant replacement of all air, with as little heat loss as possible, is the ideal condition for all houses. When the sole concern is fresh air, simple fans may be used to continuously exhaust stale air from specific rooms, with fresh air entering through controllable slots in external walls. However the higher the price of energy, the more economically attractive the concept of heat-recovery. A heat-recovery ventilation system without an air-heater does not provide any "new" heat - it only saves existing heat. To heat the house, any source or form of heat, such as underfloor heating, radiators, stoves, etc. run by oil, gas, sun, solid fuel or electricity may be used in conjunction with the system if necessary.



Features

---Floor

The concrete foundation slab is contained on its perimeter within specially made insulated base units. It sits on 300mm of insulation.
U-value: 0.10 W/m²K

---Walls

The walls are at least 145mm timber framed with 145mm insulation. In most cases they are upgraded on site by a further 70mm or even 190mm of insulation. The wall is back ventilated so that any water that may have entered the first layer can safely run and dry off.
U-value: 0.10 - 0.15 W/m²K

---Roof

For a single storey building we specify 500mm of insulation above the ceiling. For a house with a converted attic the flat part above the first floor also contains 500mm of insulation, while the slope typically consists of 400-500mm insulation. The roof is ventilated below the sarking from eaves to ridge, where the air exits through gills.
U-value: 0.06 - 0.10 W/m²K

---Windows

All windows are alu-clad timber with triple-glazed low emission glass on the inside and argon gas in the two 12mm gaps between the panes.
U-value: 0.85 W/m²K

---Doors

Entrance doors are typically 60mm insulated sandwich doors. Some of them can have windows.
U-value: 0.6 - 0.85 W/m²K

All our houses are constructed using a modular production system.



Design

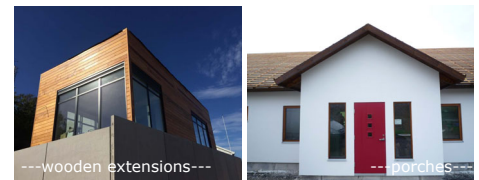
We offer four series of houses (Atlantica, Baltica, Nordica and Hibernia). All houses are built to the same basic specification. The series differ from each other only in the width of the main body of the building.

All houses are fully customizable and can have any floor plan layout you wish. There are also many features available to individualize the house design, which are featured in the following column but we are also always open to new ideas.

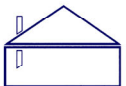
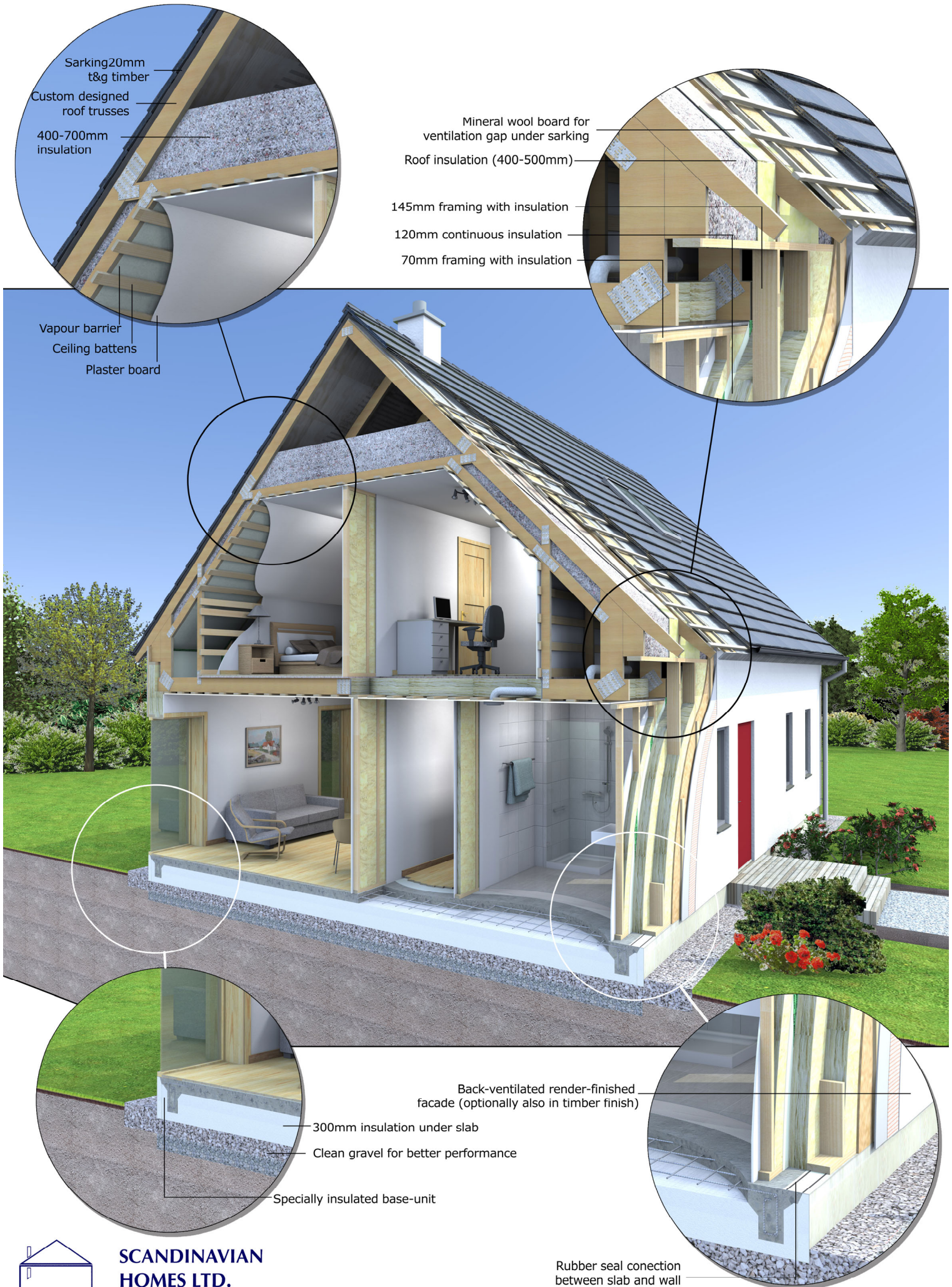
However, the passive house concept encourages you to minimize the area of the thermal envelope as this has a large impact on the energetic performance of the house.



We also welcome customer designs and ideas as long as they are feasible and buildable with our modular system. There are many easy to use and free programs you can use to make your own sketches but you can also engage our experienced in-house architect for more ideas and plans for your planning application.



How our houses are built....

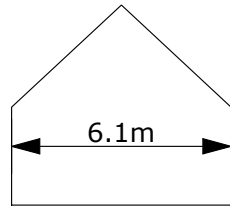


**SCANDINAVIAN
HOMES LTD.**

Rubber seal connection between slab and wall

Atlantica

The Atlantica model is the narrowest house from our range. It has the same external width as the traditional cottages of rural Ireland, but is much wider inside because the external walls are not as thick. A standard roof pitch of 30° can be increased up to 45°.



Finished ceiling height:
Ground floor 2.53m
Attic floor 2.42m

Raised wall

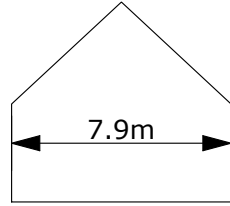
design *page*

A041-35-SHI	4
A061-45-SHI	5
A068-40-SHI	6
A082-35-SHI	7



Baltica

The Baltica is also a relatively narrow structure, and with increased roof pitch, its dimensions are similar and in proportion to the traditional farm houses in the Irish landscape. This feature makes it a good choice in locations where an indigenous shape is preferable or is stipulated in the planning regulations.



Finished ceiling height:
Ground floor 2.53m
Attic floor 2.42m

Raised wall

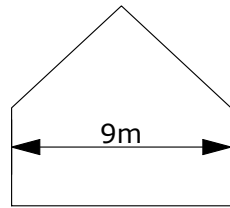
design *page*

B081-35-SHL	8
B081-45-SHL	9
B081-38-SHI	10
B108-35-SHI	11
B117-45-SHL	12
B135-35-SHL	13



Nordica

This is the best-selling house type in the range. It is a relatively wide structure, and therefore has a relatively small surface area. This characteristic makes the Nordica more economical to produce and very energy efficient to operate - especially if the site allows the windows to be positioned so as to get maximum benefit from passive solar radiation.



Finished ceiling height:
Ground floor 2.53m
Attic floor 2.42m

Raised wall

Raised wall

Raised wall

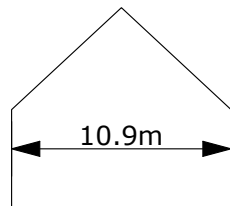
design *page*

N094-30-SHL	14
N094-40-SHL	15
N094-35-SHL	16
N125-30-SHL	17
N125-40-SHL	18
N125-35-SHI	19
N125-35-SHL	20
N156-35-SHI	21



Hibernia

This is the largest house type in our range. It is a wide bodied structure which is suitable as a large home or for other uses. Having a relatively wide structure means the Hibernia is energy efficient because of it's small surface area relative to floor area.



Finished ceiling height:
Ground floor 2.53m
Attic floor 2.42m

design *page*

H113-30-SHI	22
H164-30-SHI	23
H164-35-SHI	24
H214-30-SHI	25

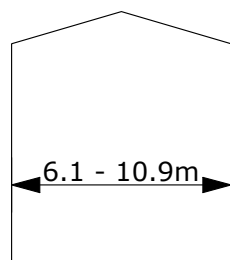


Two-storey

All of our houses are also available in a full two-storey configuration. The names change as listed:

Atlantica (A) > Utklippan (U)
Baltica (B) > Kattegatt (K)
Nordica (N) > Skagerack (S)
Hibernia (H) > Draget (D)

All roof pitches are as a standard 30°.

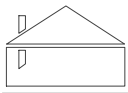


Finished ceiling height:
Ground floor 2.53m
First floor 2.50m

design *page*

U123-35-SHI	26
K162-30-SHI	27
S188-30-SHI	28
D226-27-SHI	29





☑ Passive House

($U_{wall}=0.15 \text{ W/m}^2\text{K}$, $U_{roof}=0.10 \text{ W/m}^2\text{K}$)

39m²

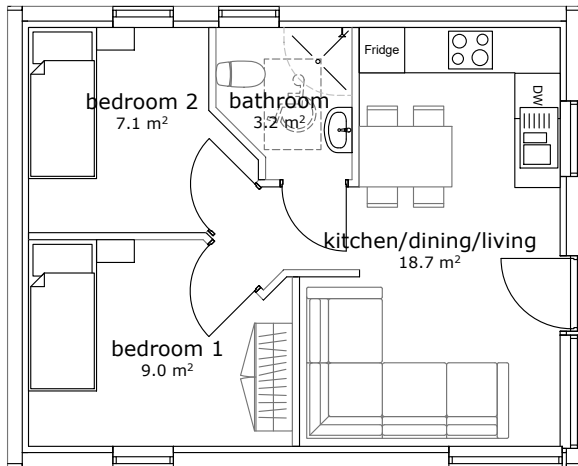
(Gross Internal Area = TUFA)

Atlantica Series

drawing not to scale



Price available online, click link below:
<https://scanhome.ie/archive/pricelist/Atlantica.pdf>

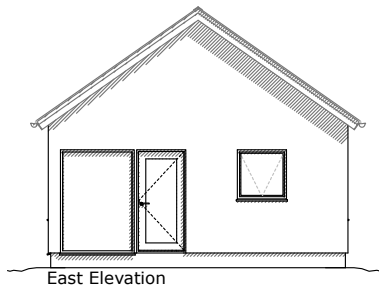


Atlantica 41:

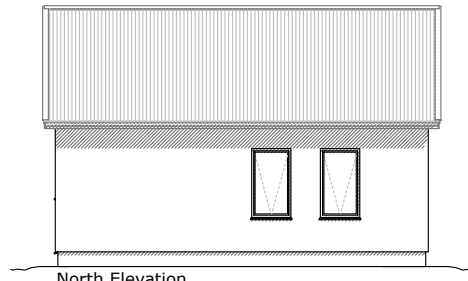
- Internal dimensions: 5.5 m x 7.0 m
External dimensions: 6.1 m x 7.6 m

This sample model shows that even a very small house can be attractive and charming. The same house could also be built with a plaster finish and barged gables.

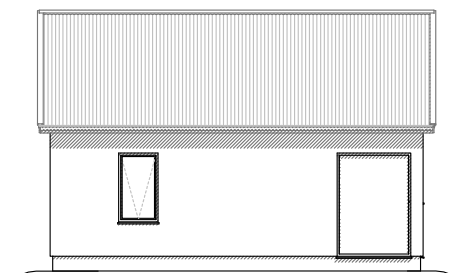
It can be used as a modest cottage with up to two bedrooms or as a holiday batch or granny flat.



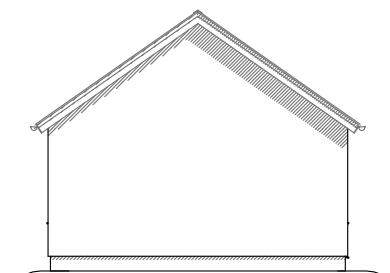
East Elevation



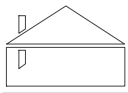
North Elevation



South Elevation



West Elevation



☑ Passive House

($U_{wall}=0.15$ W/m²K, $U_{roof}=0.10$ W/m²K)

101m²

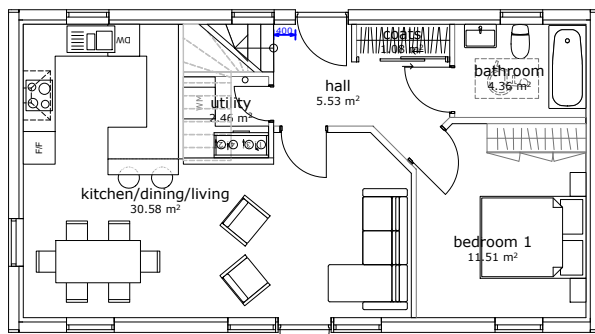
(Gross Internal Area = TUFA)

Atlantica Series

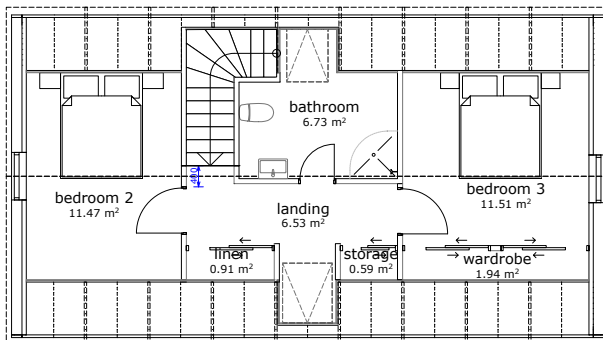
drawing not to scale



Price available online, click link below:
<https://scanhome.ie/archive/pricelist/Atlantica.pdf>



ground floor



first floor

Atlantica 61:

Internal dimensions: 5.7 m x 10.6 m

External dimensions: 6.1 m x 11.2 m

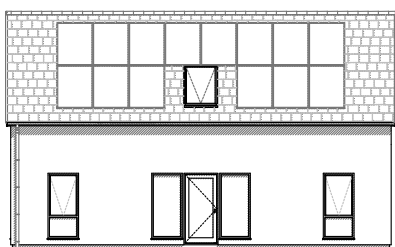
This model has the same width as the Atlantica 41 but is 3.6m longer and has a converted attic with a 45° roof pitch.

It is a great house size for a small to medium family, especially where planning regulations require for a narrow bodied building shape.

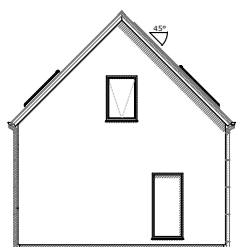
As an optional feature, the roof could be lifted a bit to allow for greater head height upstairs.

The house could also have a tiled roof and white plaster finish.

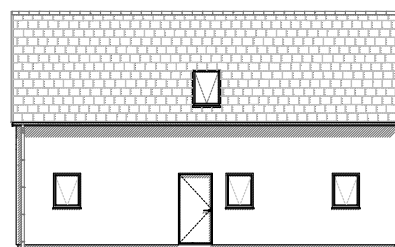
The design allows for 3 bedrooms.



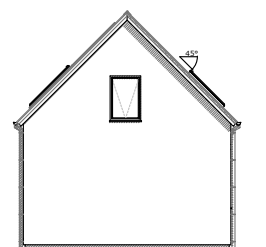
South elevation



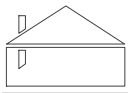
West elevation



North elevation



East elevation



☑ Passive House

($U_{wall}=0.15 \text{ W/m}^2\text{K}$, $U_{roof}=0.10 \text{ W/m}^2\text{K}$)

111m²

(Gross Internal Area = TUFA)

Atlantica Series

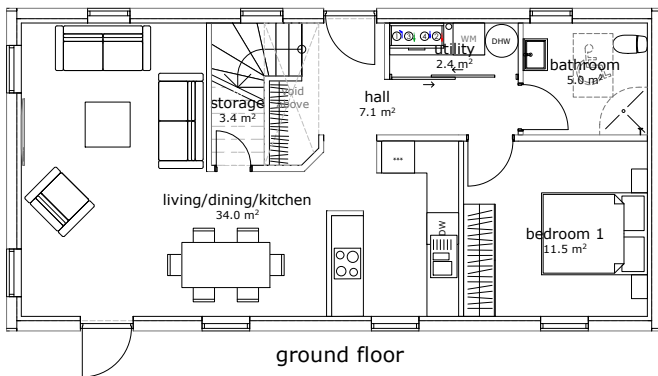
drawing not to scale



Raised wall

This house has our raised wall feature with a more spacious upstairs.

Price available online, click link below:
<https://scanhome.ie/archive/pricelist/Atlantica.pdf>



ground floor

Atlantica 68:

Internal dimensions: 5.7 m x 11.8 m

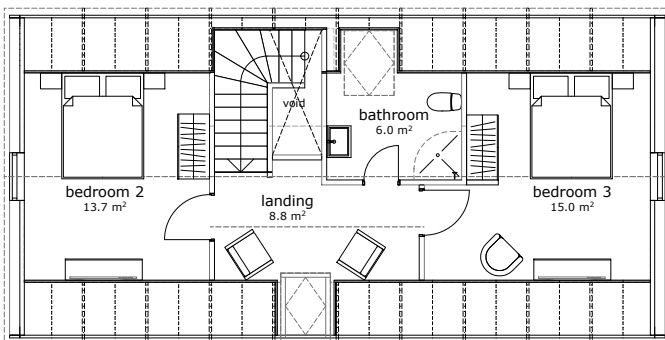
External dimensions: 6.1 m x 12.4 m

This model has the same width as the Atlantica 61 but is 1.2m longer and has a converted attic with a raised roof and 40° roof pitch.

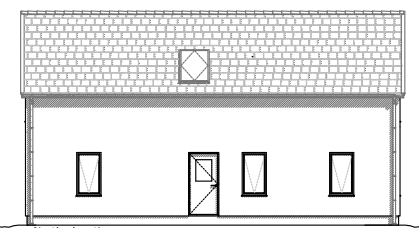
This version was developed to allow for another bedroom on the ground floor and to just give that small bit of extra space.

The dark area between the ground floor windows towards the South is a more cost-effective alternative to wooden cladding and is simply a darker plaster colour..

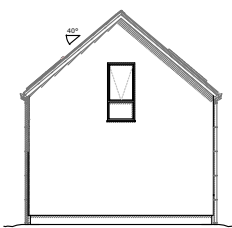
The design allows for 3 bedrooms.



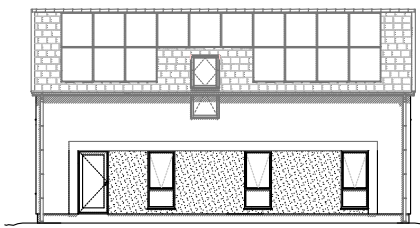
first floor



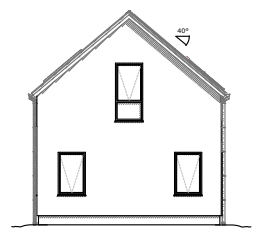
North elevation



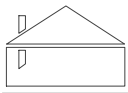
East elevation



South elevation



West elevation



☑ **Passive House**

($U_{wall}=0.15 \text{ W/m}^2\text{K}$, $U_{roof}=0.10 \text{ W/m}^2\text{K}$)

79m²

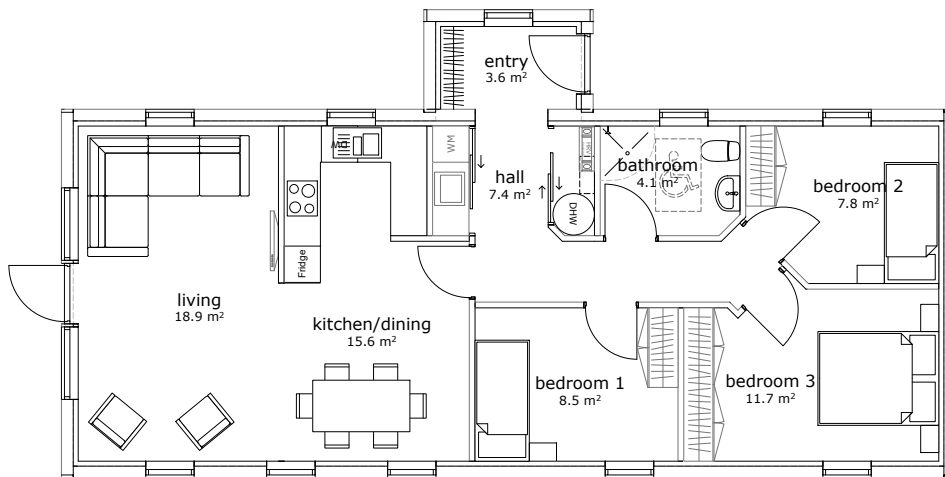
(Gross Internal Area = TUFA)

Atlantica Series

drawing not to scale



Price available online, click link below:
<https://scanhome.ie/archive/pricelist/Atlantica.pdf>

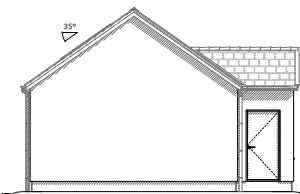


Atlantica 82:

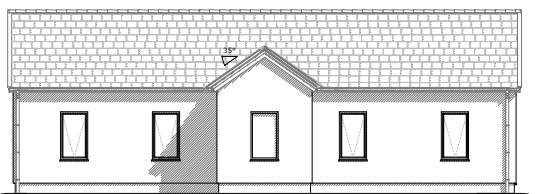
Internal dimensions: 5.5 m x 14.2 m
External dimensions: 6.1 m x 14.8 m

This Atlantica example is designed as single storey but has a roof pitch of 35°.

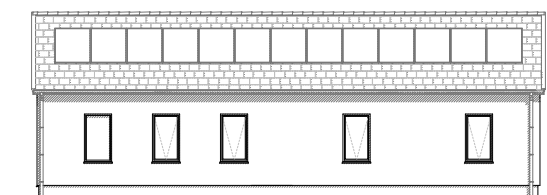
It contains traditional sized windows making it fit perfectly into the Irish landscape. The West facing more modern looking windows allow plenty of light into the living areas. The design allows for 3 bedrooms.



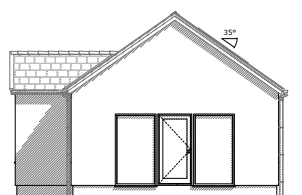
East Elevation



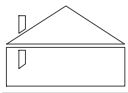
North Elevation



South Elevation



West Elevation



Passive House

($U_{wall}=0.15$ W/m²K, $U_{roof}=0.10$ W/m²K)

78m²

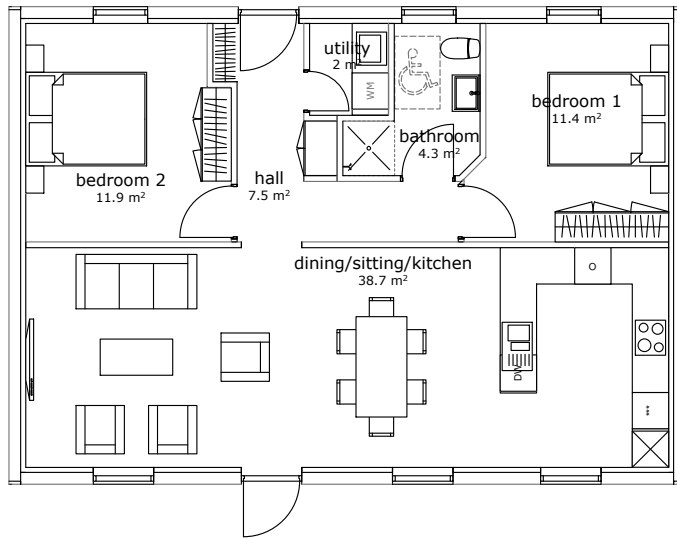
(Gross Internal Area = TUFA)

Baltica Series

drawing not to scale



Price available online, click link below:
<https://scanhome.ie/archive/pricelist/Baltica.pdf>



Baltica 81-35:

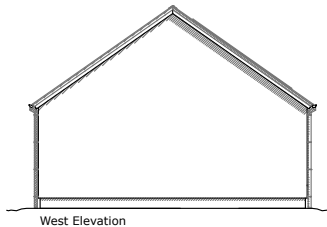
Internal dimensions: 7.3 m x 10.6 m

External dimensions: 7.9 m x 11.2 m

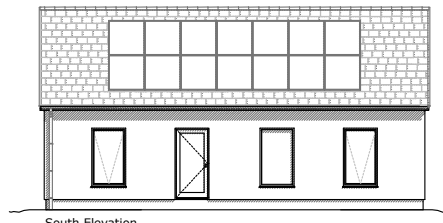
This single storey Baltica example has a roof pitch of 35°.

It contains a short roof giving it a modern & traditionally Irish look. This version uses a standard passive upgrade.

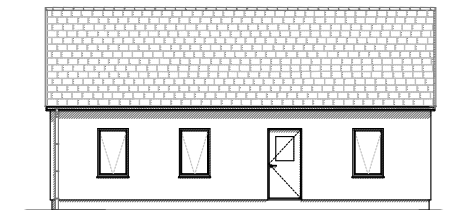
The design allows for 2 bedrooms.



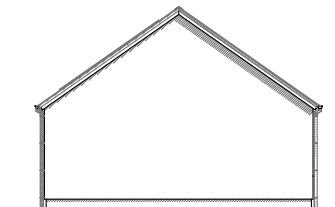
West Elevation



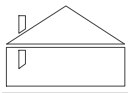
South Elevation



North Elevation



East Elevation



☑ Passive House

($U_{wall}=0.15 \text{ W/m}^2\text{K}$, $U_{roof}=0.10 \text{ W/m}^2\text{K}$)

134m²

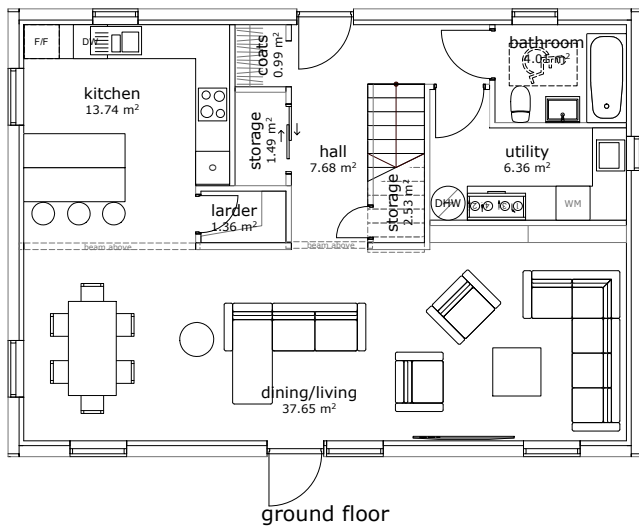
(Gross Internal Area = TUFA)

Baltica Series

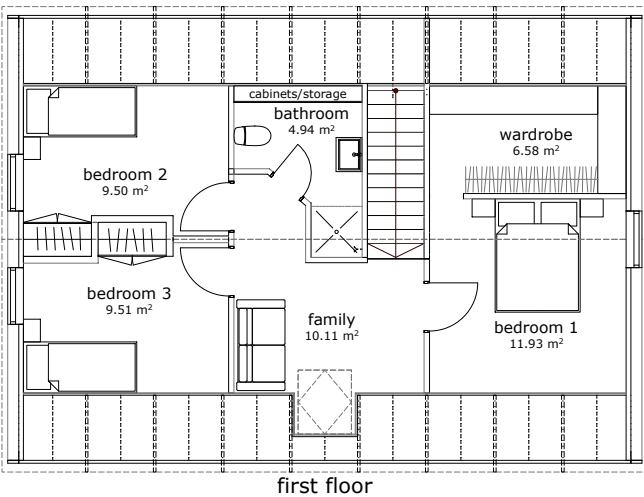
drawing not to scale



Price available online, click link below:
<https://scanhome.ie/archive/pricelist/Baltica.pdf>



ground floor



first floor

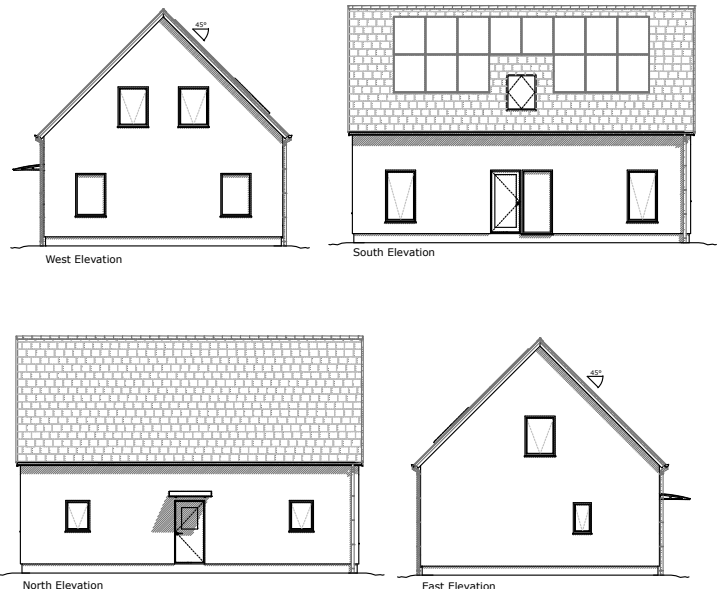
Baltica 81-45:

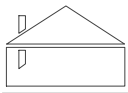
Internal dimensions: 7.3 m x 10.6 m
External dimensions: 7.9 m x 11.2 m

This Baltica example has a maximized roof pitch of 45° and a converted attic.

It contains a short roof giving it a modern look. This version leaves an optional space for an upstairs bathroom and uses a standard passive upgrade.

The design allows for 3 bedrooms.





✓ **Passive House**

($U_{wall}=0.15 \text{ W/m}^2\text{K}$, $U_{roof}=0.10 \text{ W/m}^2\text{K}$)

135m²

(Gross Internal Area = TUFA)

Baltica Series

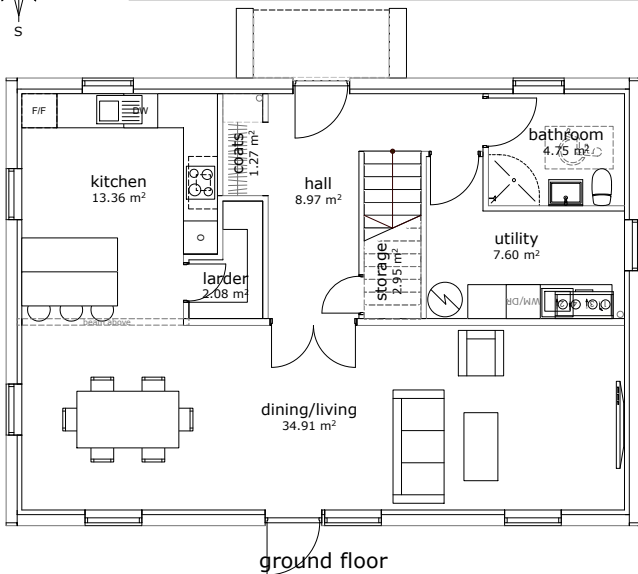
drawing not to scale



Raised wall

This house has our raised wall feature with a more spacious upstairs.

Price available online, click link below:
<https://scanhome.ie/archive/pricelist/Baltica.pdf>



ground floor

Baltica 81-38:

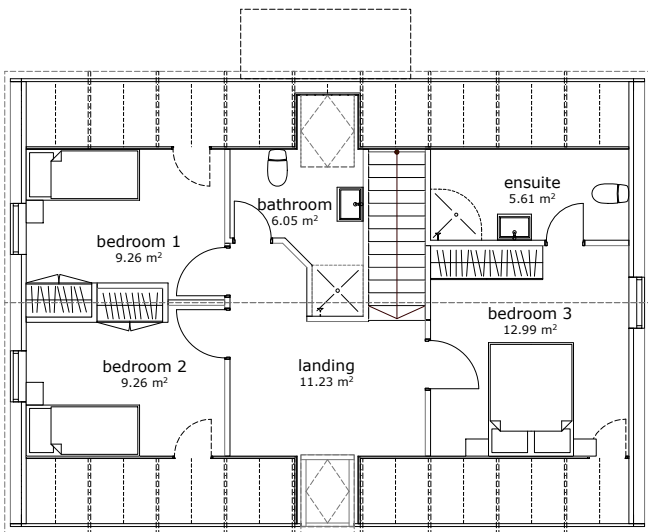
Internal dimensions: 7.3 m x 10.6 m

External dimensions: 7.9 m x 11.2 m

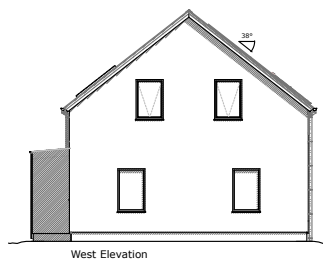
This Baltica example has a roof pitch of 38° and a converted attic with a raised roof.

It contains a short roof giving it a modern look. The higher wall to roof ratio makes it more popular with the planners. It uses a standard passive upgrade.

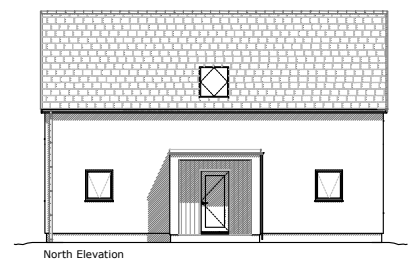
The design allows for 3 bedrooms - one with ensuite).



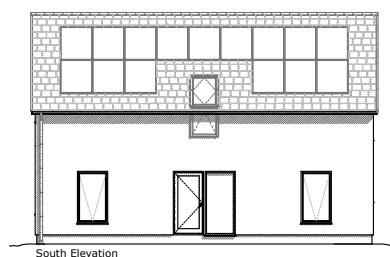
first floor



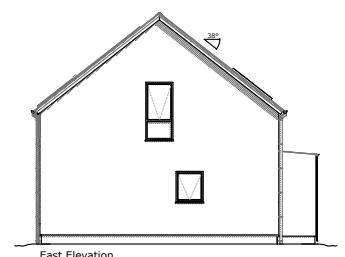
West Elevation



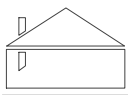
North Elevation



South Elevation



East Elevation



✓ Super Passive House

($U_{wall}=0.10$ W/m²K, $U_{roof}=0.08$ W/m²K)

99m²

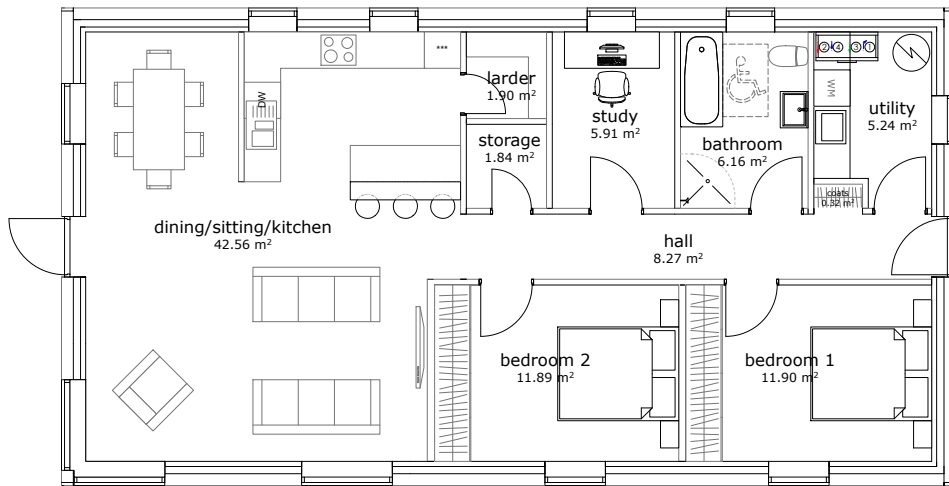
(Gross Internal Area = TUFA)

Baltica Series

drawing not to scale



Price available online, click link below:
<https://scanhome.ie/archive/pricelist/Baltica.pdf>



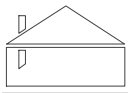
Baltica 108-35:

Internal dimensions: 7.3 m x 14.2 m
External dimensions: 7.9 m x 14.8 m

This modern design with its 35° roof pitch has no attic conversion but contains all spaces expected in a modern home on one level. The glazing in the living room is located to South and West and can optionally be surrounded by a thicker frame than shown to increase shading. The wall cladding is vertical, stained pine boards.

The design allows for 2 bedrooms and one study.





☑ Super Passive House

($U_{wall}=0.10 \text{ W/m}^2\text{K}$, $U_{roof}=0.08 \text{ W/m}^2\text{K}$)

188m²

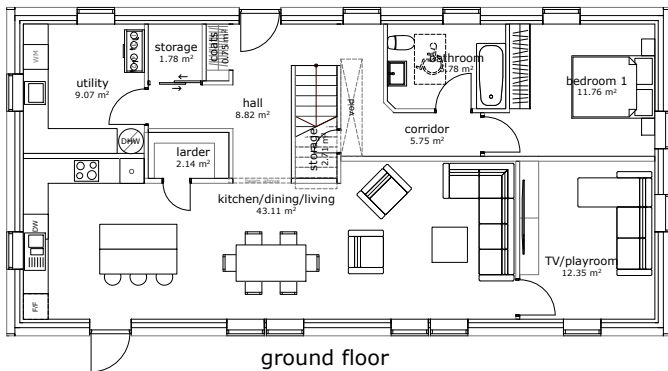
(Gross Internal Area = TUFA)

Baltica Series

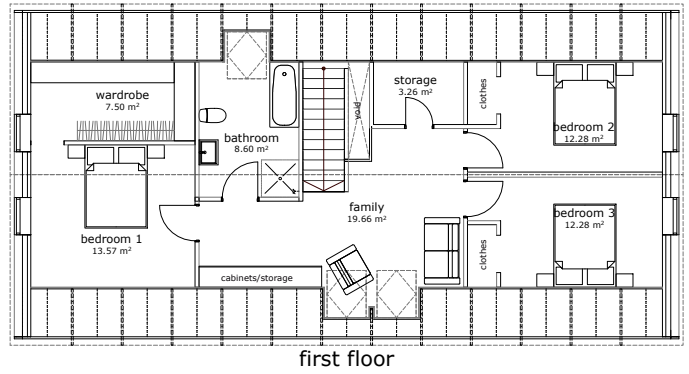
drawing not to scale



Price available online, click link below:
<https://scanhome.ie/archive/pricelist/Baltica.pdf>



ground floor



first floor

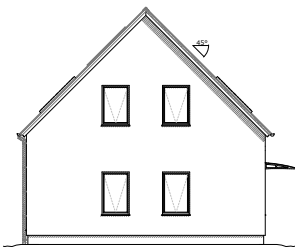
Baltica 117-45:

Internal dimensions: 7.3 m x 15.2 m

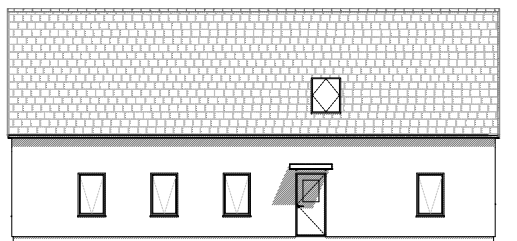
External dimensions: 7.9 m x 16.0 m

This Baltica 117 version features an open living/dining kitchen with a separate tv/snug/playroom. There is a large utility with plenty of storage both downstairs and upstairs. Upstairs features a generous landing/family area and 3 large bedrooms.

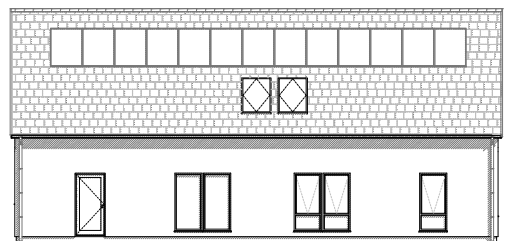
The design allows for a total of 4 bedrooms.



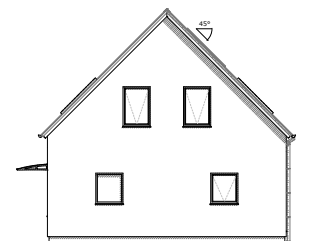
East Elevation



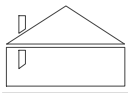
North Elevation



South Elevation



West Elevation



☑ Super Passive House

($U_{wall}=0.10 \text{ W/m}^2\text{K}$, $U_{roof}=0.08 \text{ W/m}^2\text{K}$)

125m²

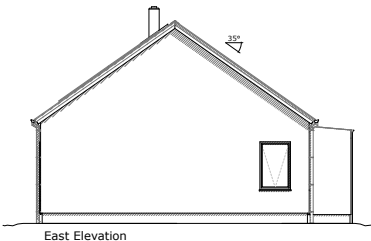
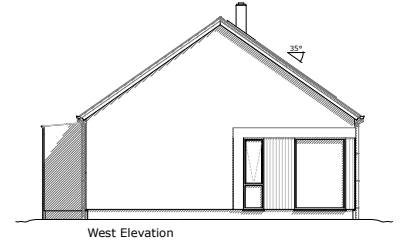
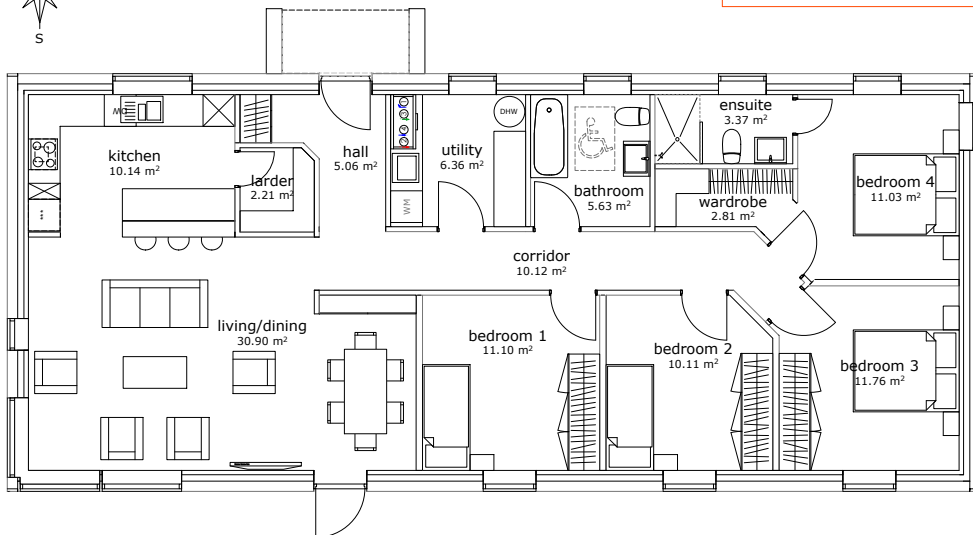
(Gross Internal Area = TUFA)

Baltica Series

drawing not to scale



Price available online, click link below:
<https://scanhome.ie/archive/pricelist/Baltica.pdf>

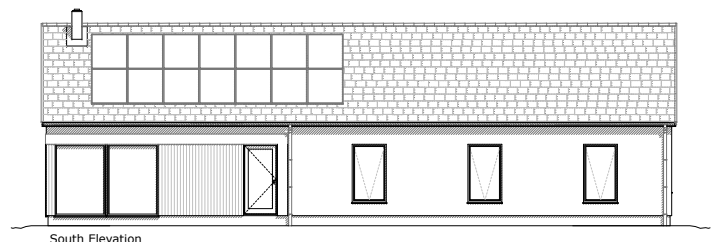
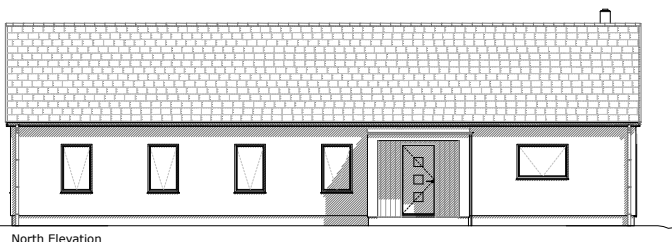


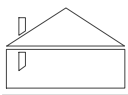
Baltica 135-35:

Internal dimensions: 7.3 m x 17.8 m
External dimensions: 7.9 m x 18.4 m

This Baltica 135 version with a new design and contemporary living room window feature has become very popular. A sliding element could be added optionally to help with cooling in the summer months. The featured area is clad in oiled timber cladding boards.

The design allows for 4 bedrooms, one of them with an ensuite.





☑ **Passive House**

($U_{wall}=0.15 \text{ W/m}^2\text{K}$, $U_{roof}=0.10 \text{ W/m}^2\text{K}$)

91m²

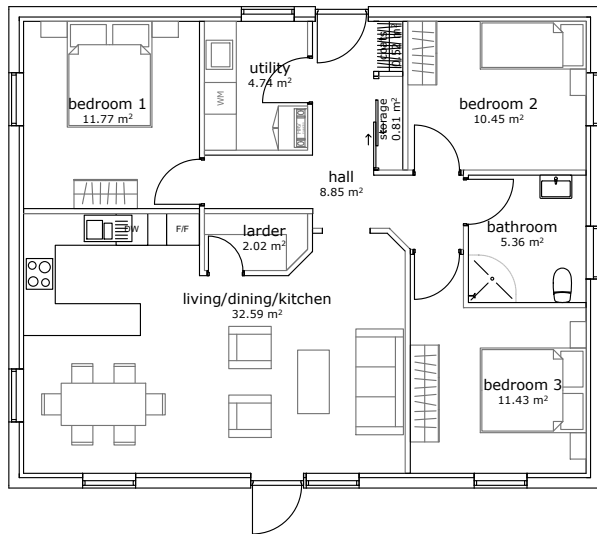
(Gross Internal Area = TUFA)

Nordica Series

drawing not to scale



Price available online, click link below:
<https://scanhome.ie/archive/pricelist/Nordica.pdf>



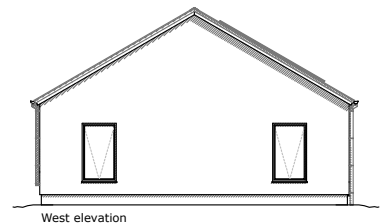
Nordica 94-30:

Internal dimensions: 8.5 m x 10.6 m

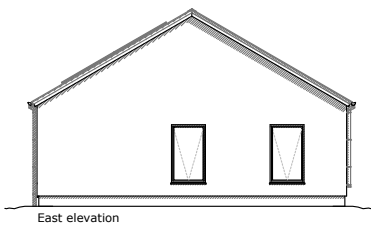
External dimensions: 9.1 m x 11.2 m

This is the single storey version of our our best selling house model. We have also built a few of this type, generally for young or elderly couples that don't require a huge amount of space.

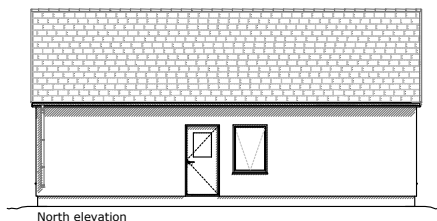
This featured design allows for 3 bedrooms.



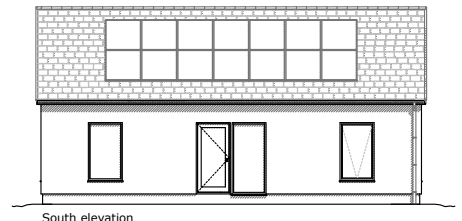
West elevation



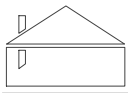
East elevation



North elevation



South elevation



☑ Passive House

($U_{wall}=0.15 \text{ W/m}^2\text{K}$, $U_{roof}=0.10 \text{ W/m}^2\text{K}$)

156m²

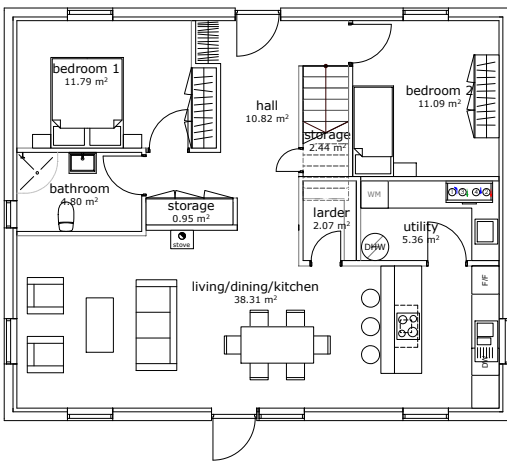
(Gross Internal Area = TUFA)

Nordica Series

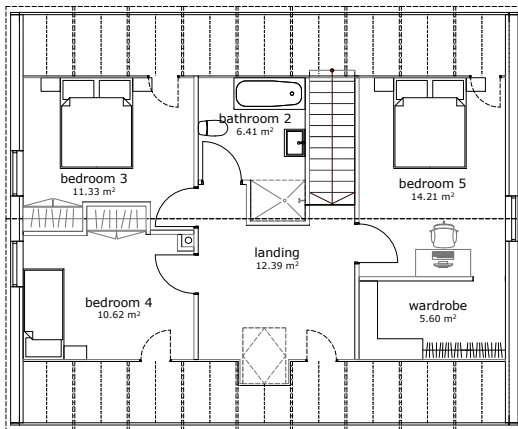
drawing not to scale



Price available online, click link below:
<https://scanhome.ie/archive/pricelist/Nordica.pdf>



ground floor



first floor

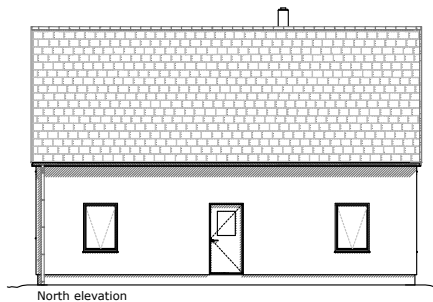
Nordica 94-40:

Internal dimensions: 8.5 m x 10.6 m

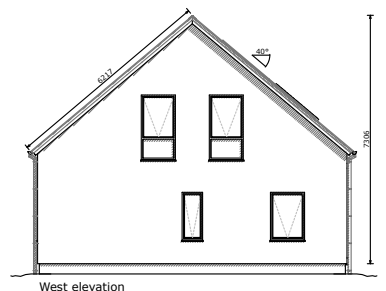
External dimensions: 9.1 m x 11.2 m

This is our best selling house model. Since our first construction in 1993 we built nearly 80 of this type in all sort of variations. Due to its good wall to floor area ratio this is an ideal size for passive performance.

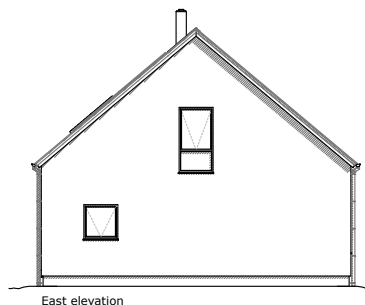
This featured design allows for 5 bedrooms.



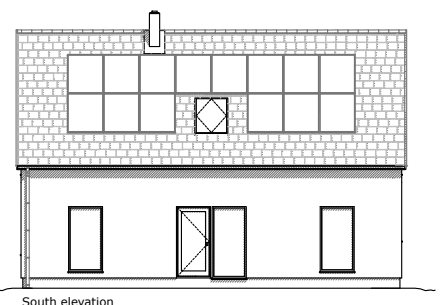
North elevation



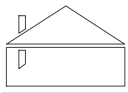
West elevation



East elevation



South elevation



☑ Super Passive House

($U_{wall}=0.10 \text{ W/m}^2\text{K}$, $U_{roof}=0.08 \text{ W/m}^2\text{K}$)

150m²

(Gross Internal Area = TUFA)

Nordica Series

drawing not to scale



Raised wall

This house has our raised wall feature with a more spacious upstairs.

Price available online, click link below:
<https://scanhome.ie/archive/pricelist/Nordica.pdf>



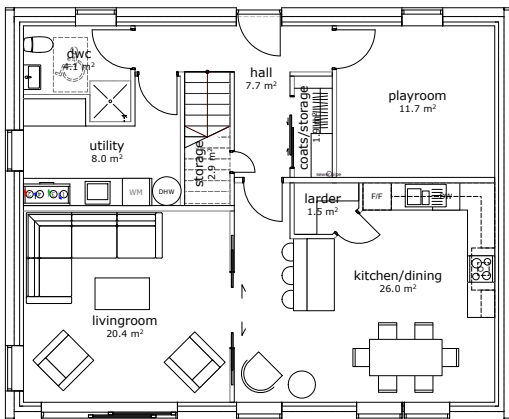
Nordica 94-35:

Internal dimensions: 8.4 m x 10.5 m

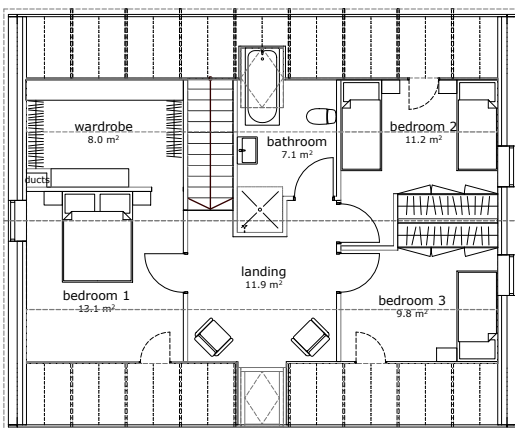
External dimensions: 9.1 m x 11.2 m

This is our best selling house model. Since our first construction in 1993 we built nearly 80 of this type in all sort of variations. Due to its good wall to floor area ratio this is an ideal size for passive performance.

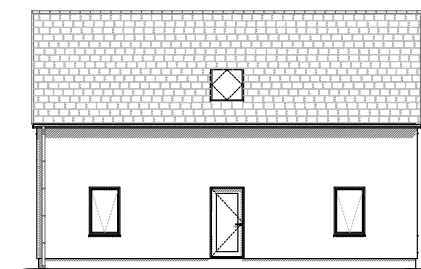
This featured design allows for 3 bedrooms and one playroom.



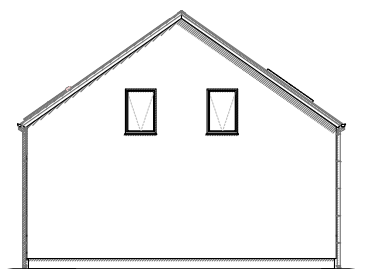
ground floor



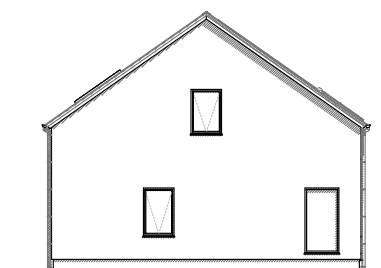
first floor



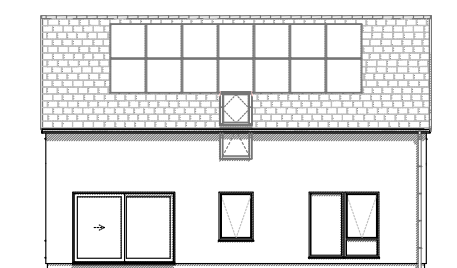
North elevation



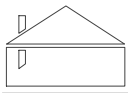
East elevation



West elevation



South elevation



☑ **Passive House**

($U_{wall}=0.15 \text{ W/m}^2\text{K}$, $U_{roof}=0.10 \text{ W/m}^2\text{K}$)

122m²

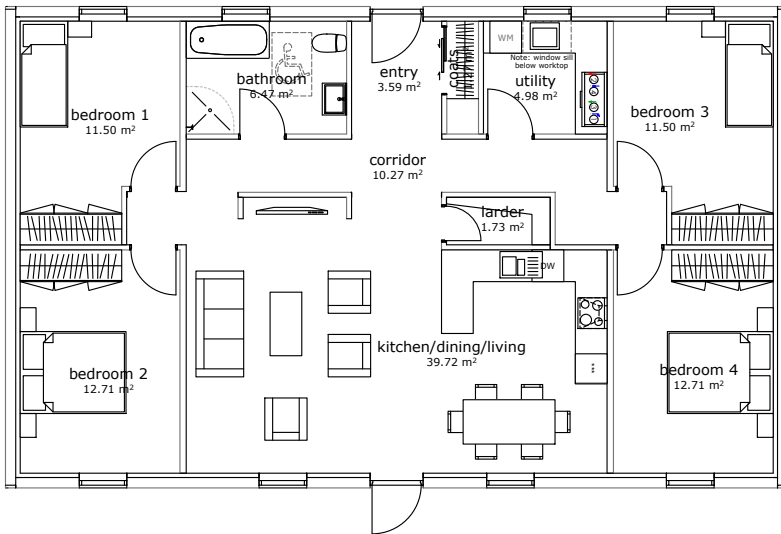
(Gross Internal Area = TUFA)

Nordica Series

drawing not to scale



Price available online, click link below:
<https://scanhome.ie/archive/pricelist/Nordica.pdf>



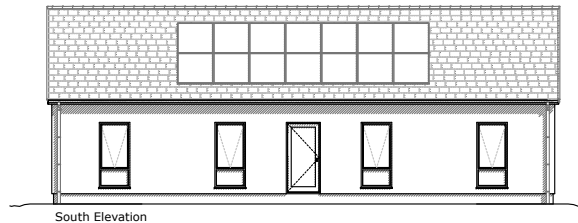
Nordica 125-35:

Internal dimensions: 8.5 m x 14.2 m

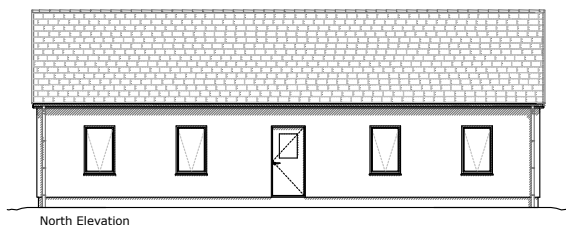
External dimensions: 9.1 m x 14.8 m

This is a single storey version of our widely popular model of the Nordica Series. This version has the bedrooms to each side and living room with kitchen and dining in the centre. To keep the living areas feel more open plan there is no wall between the western bedrooms, but this could potentially be added easily.

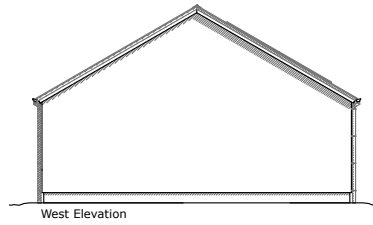
This featured design allows for 4 bedrooms.



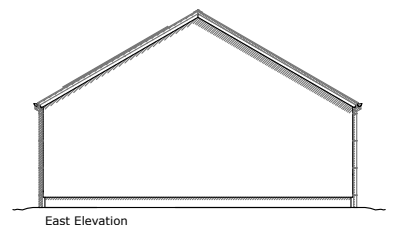
South Elevation



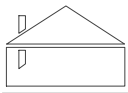
North Elevation



West Elevation



East Elevation



☑ Super Passive House

($U_{wall}=0.10 \text{ W/m}^2\text{K}$, $U_{roof}=0.08 \text{ W/m}^2\text{K}$)

200m²

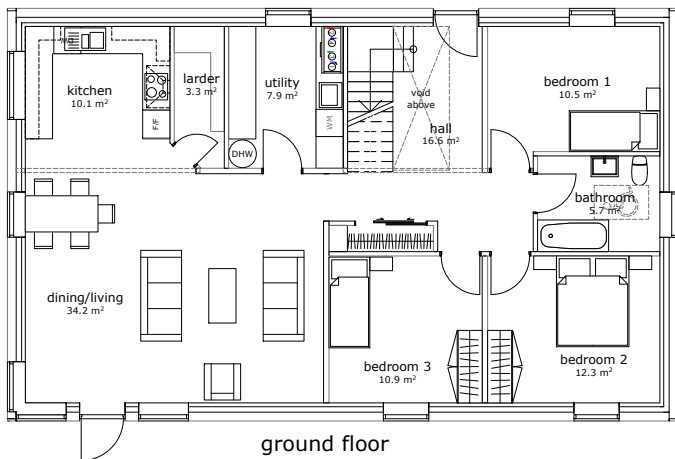
(Gross Internal Area = TUFA)

Nordica Series

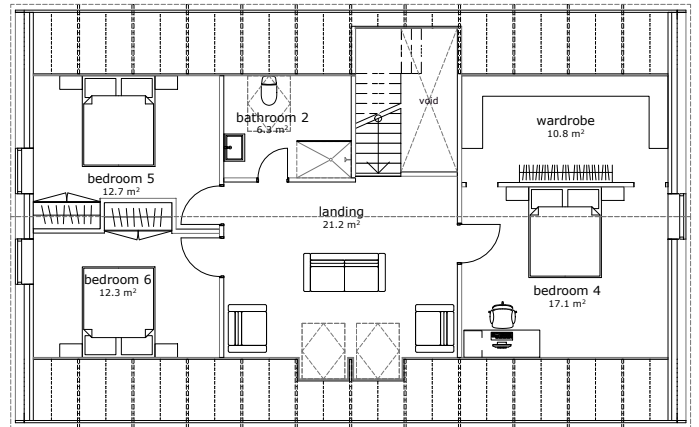
drawing not to scale



Price available online, click link below:
<https://scanhome.ie/archive/pricelist/Nordica.pdf>



ground floor



first floor

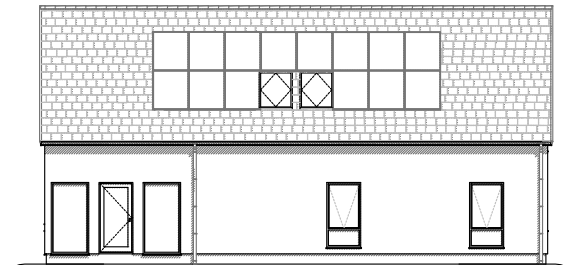
Nordica 125-40:

Internal dimensions: 8.5 m x 14.2 m

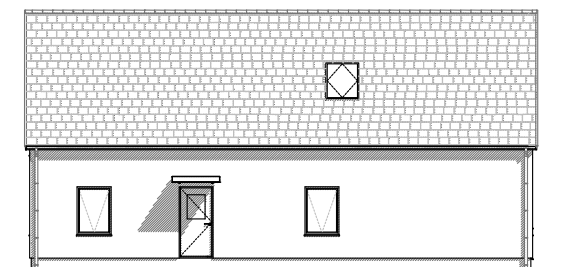
External dimensions: 9.1 m x 14.8 m

This is our latest and most contemporary design. It has also been a widely popular model. With almost 30 built, this is ideal for larger families.

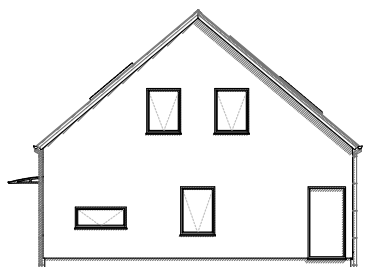
This featured design allows for 6 bedrooms.



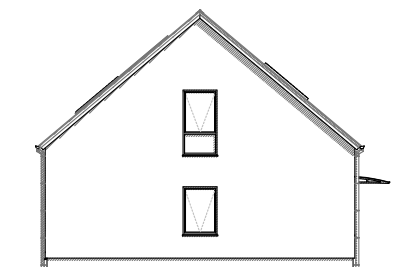
South elevation



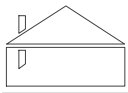
North elevation



West elevation



East elevation



Super Passive House

($U_{wall}=0.10 \text{ W/m}^2\text{K}$, $U_{roof}=0.08 \text{ W/m}^2\text{K}$)

205m²

(Gross Internal Area = TUFA)

Nordica Series

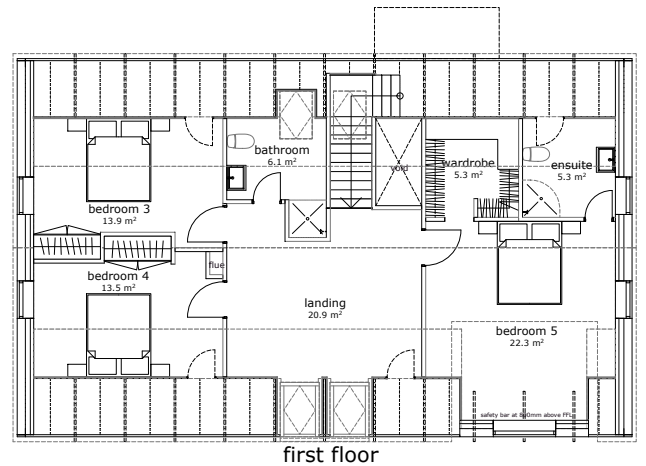
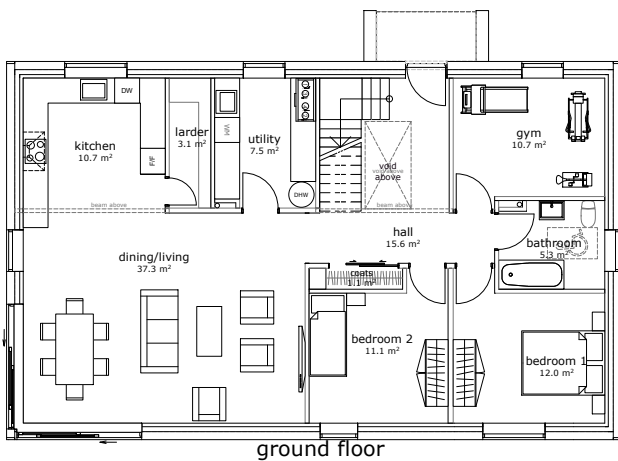
drawing not to scale



Raised wall

This house has our raised wall feature with a more spacious upstairs.

Price available online, click link below:
<https://scanhome.ie/archive/pricelist/Nordica.pdf>



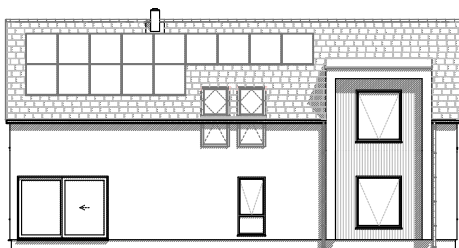
Nordica 125-35:

Internal dimensions: 8.5 m x 14.2 m

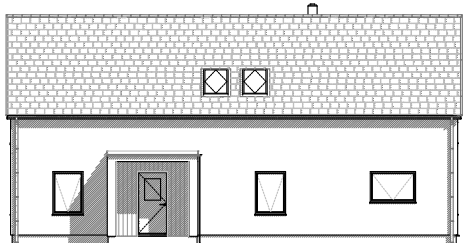
External dimensions: 9.1 m x 14.8 m

This is our latest and most contemporary design. It has also been a widely popular model. With almost 30 built, this is ideal for larger families. This version has two generous sliding doors at the corner. The master bedroom upstairs has a dormer window feature that increases the quality of the room dramatically. And there is an open porch added to the entrance door to protect from wind and rain.

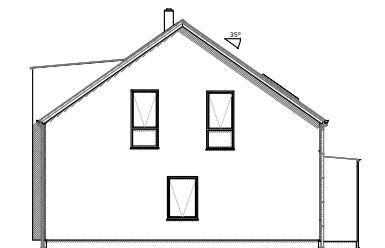
This featured design allows for 5 bedrooms and 1 gym.



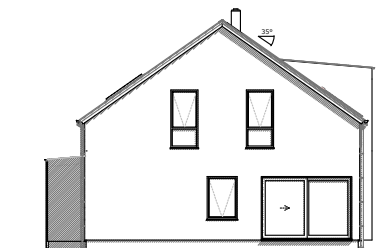
South elevation



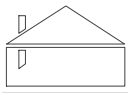
North elevation



East elevation



West elevation



☑ Super Passive House

($U_{wall}=0.10 \text{ W/m}^2\text{K}$, $U_{roof}=0.08 \text{ W/m}^2\text{K}$)

205m²

(Gross Internal Area = TUFA)

Nordica Series

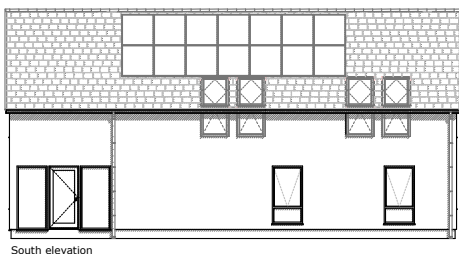
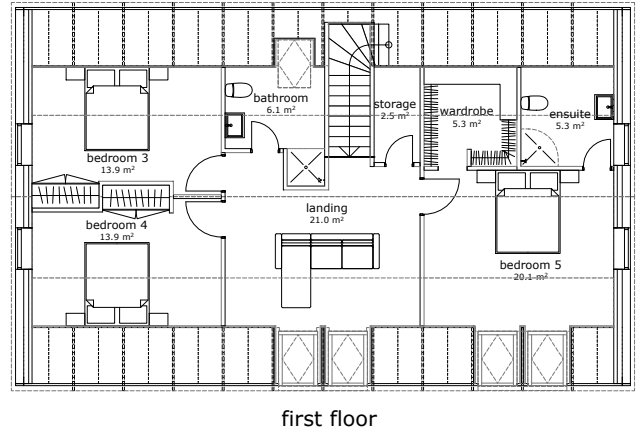
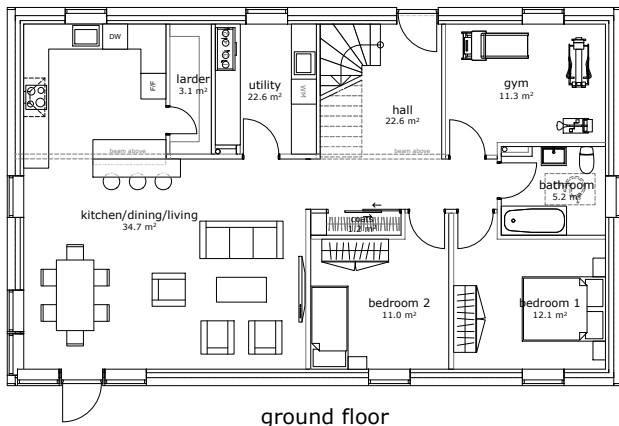
drawing not to scale



Raised wall

This house has our raised wall feature with a more spacious upstairs.

Price available online, click link below:
<https://scanhome.ie/archive/pricelist/Nordica.pdf>



South elevation

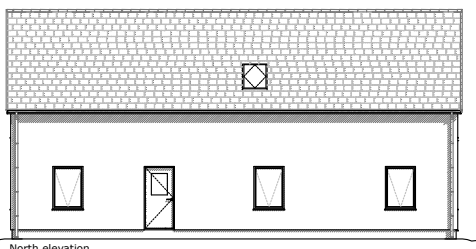
Nordica 125-35:

Internal dimensions: 8.5 m x 14.2 m

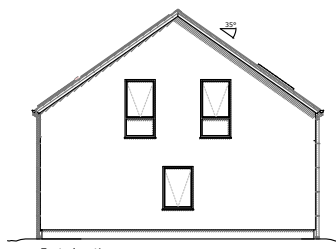
External dimensions: 9.1 m x 14.8 m

This is our latest and most contemporary design. It has also been a widely popular model. With almost 30 built, this is ideal for larger families. This version has less features than the N125-35-SHI but it is therefore more economical.

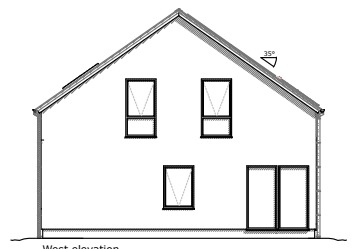
This featured design allows for 5 bedrooms plus 1 gym.



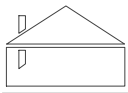
North elevation



East elevation



West elevation



✓ Super Passive House

($U_{wall}=0.10 \text{ W/m}^2\text{K}$, $U_{roof}=0.08 \text{ W/m}^2\text{K}$)

136m²

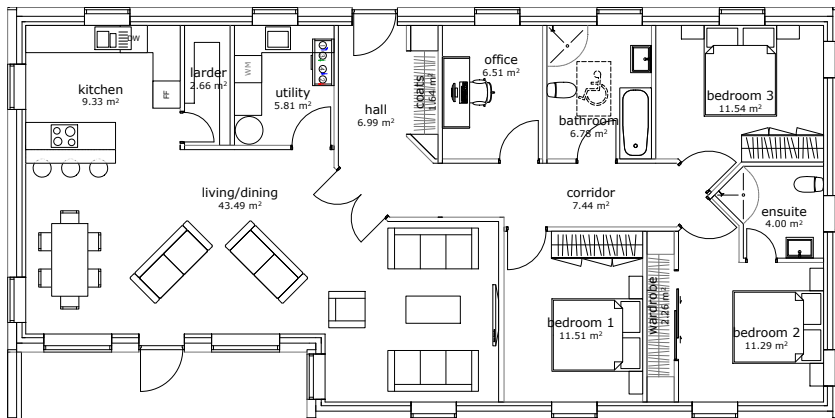
(Gross Internal Area = TUFA)

Nordica Series

drawing not to scale



Price available online, click link below:
<https://scanhome.ie/archive/pricelist/Nordica.pdf>



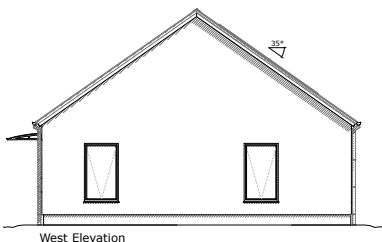
Nordica 156-35:

Internal dimensions: 8.5 m x 17.8 m

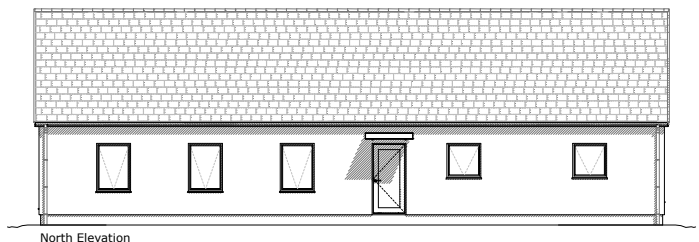
External dimensions: 9.1 m x 18.4 m

This large single storey house with a 35° roof pitch contains an open plan kitchen-dining-living area with generous full height glazing. The extra deep set-back not only provides good shading in summer but also makes for a nice outside sitting area, especially with an attached deck.

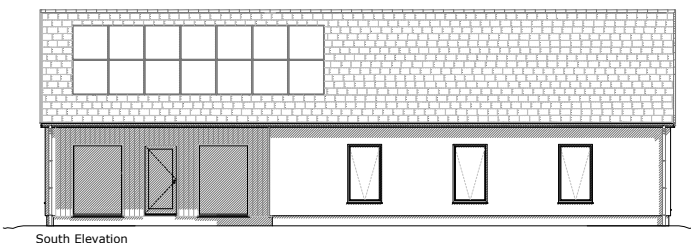
This featured design allows for 3 bedrooms plus an office/study.



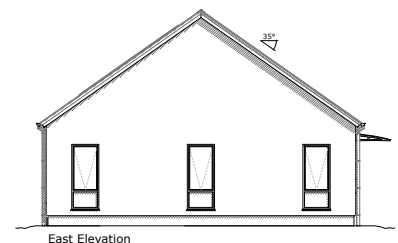
West Elevation



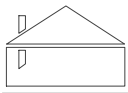
North Elevation



South Elevation



East Elevation



☑ Super Passive House

($U_{wall}=0.10 \text{ W/m}^2\text{K}$, $U_{roof}=0.08 \text{ W/m}^2\text{K}$)

105m²

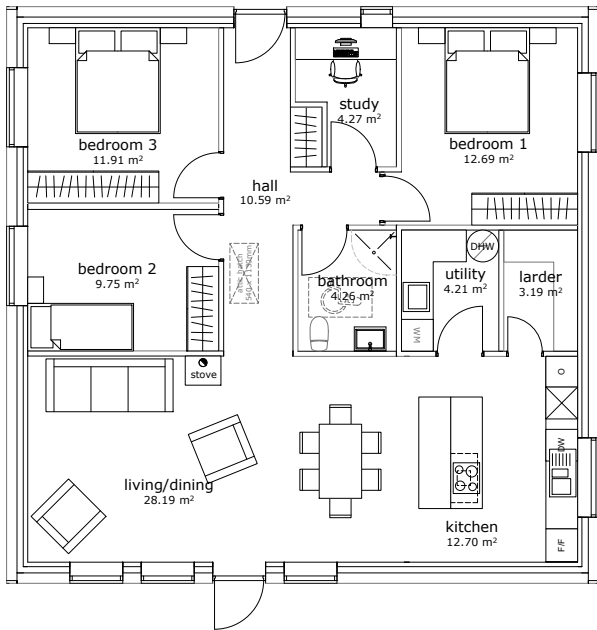
(Gross Internal Area = TUFA)

Hibernia Series

drawing not to scale



Price available online, click link below:
<https://scanhome.ie/archive/pricelist/Hibernia.pdf>

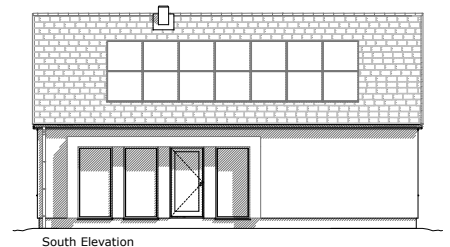


Hibernia 113-30:

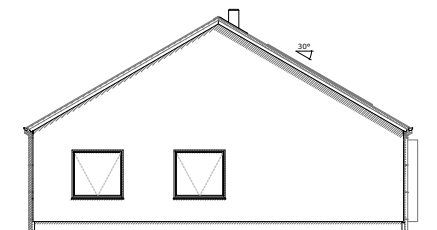
Internal dimensions: 10.3 m x 10.6 m
External dimensions: 10.9 m x 11.2 m

This model size maximizes our wall lengths of 10.8m. The square foot print ensures a good performance due to its cubical shape, especially when the attic is converted. The large living room glazing has a shading box that helps with summer shading.

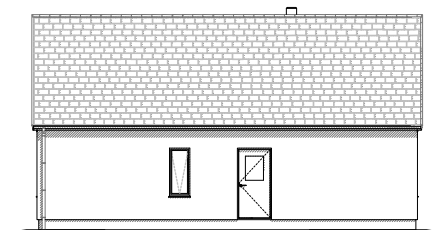
This featured design allows for 3 bedrooms.



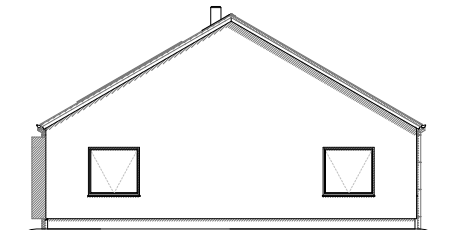
South Elevation



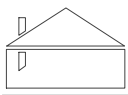
West Elevation



North Elevation



East Elevation



✓ Super Passive House

($U_{wall}=0.10 \text{ W/m}^2\text{K}$, $U_{roof}=0.08 \text{ W/m}^2\text{K}$)

154m²

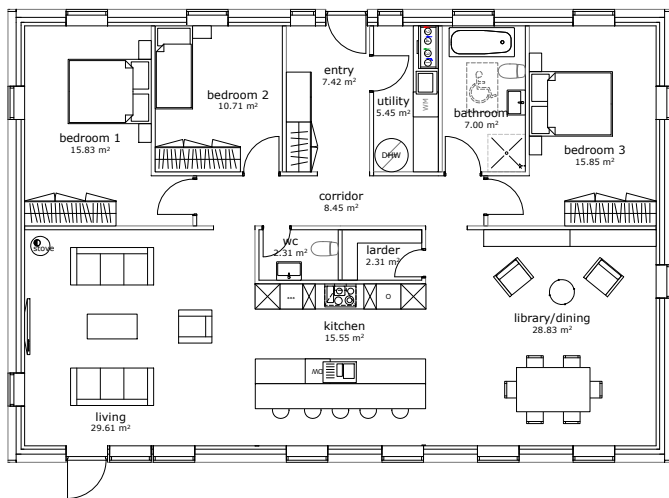
(Gross Internal Area = TUFA)

Hibernia Series

drawing not to scale



Price available online, click link below:
<https://scanhome.ie/archive/pricelist/Hibernia.pdf>

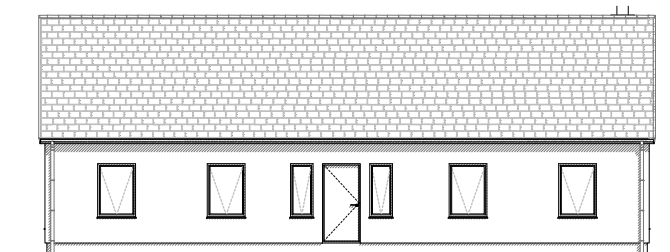


Hibernia 164-30:

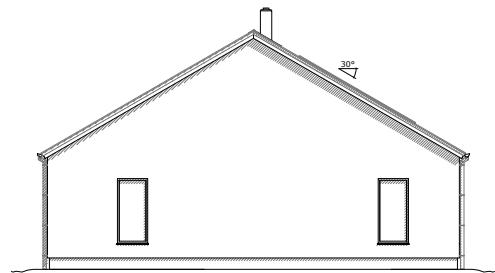
Internal dimensions: 10.3 m x 15.4 m
External dimensions: 10.9 m x 16.0 m

This is the single storey version of our showhouse. It features a large open plan sitting/dining & kitchen area. All bedrooms and wet rooms are situated on the North part of the house.

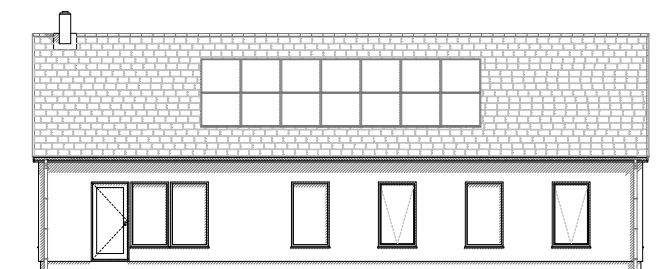
This featured design allows for 3 bedrooms.



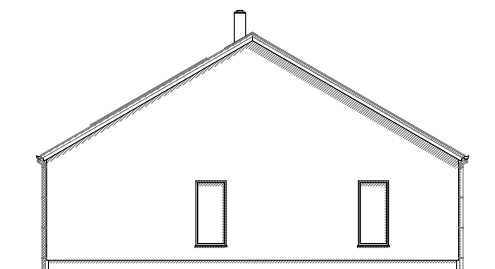
North Elevation



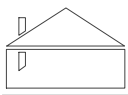
West Elevation



South Elevation



East Elevation



☑ Super Passive House

($U_{wall}=0.10 \text{ W/m}^2\text{K}$, $U_{roof}=0.08 \text{ W/m}^2\text{K}$)

260m²

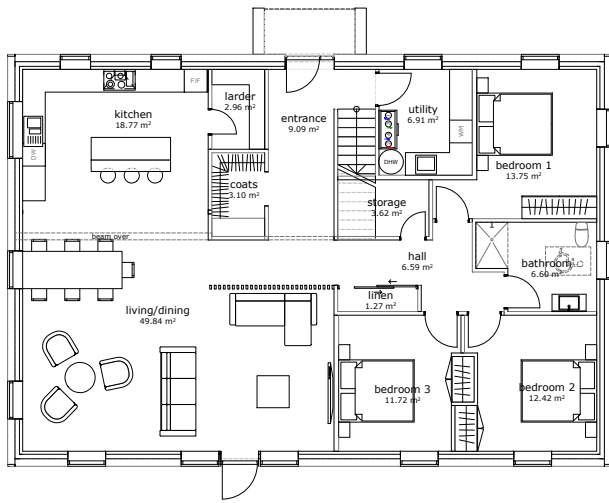
(Gross Internal Area = TUFA)

Hibernia Series

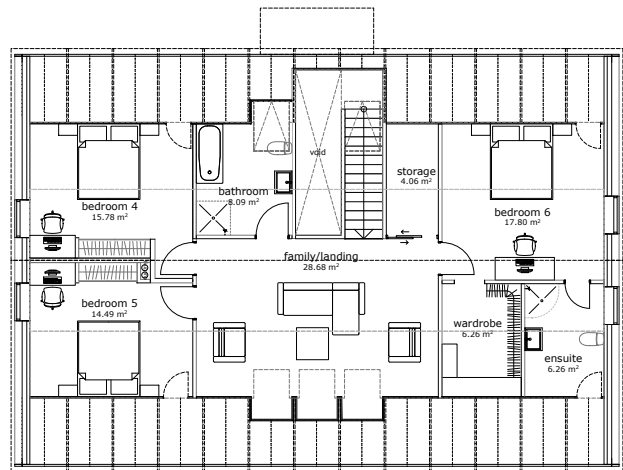
drawing not to scale



Price available online, click link below:
<https://scanhome.ie/archive/pricelist/Hibernia.pdf>



ground floor



first floor

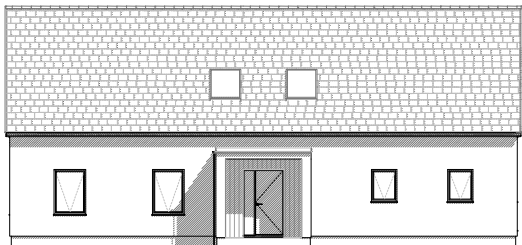
Hibernia 164-35:

Internal dimensions: 10.3 m x 15.4 m

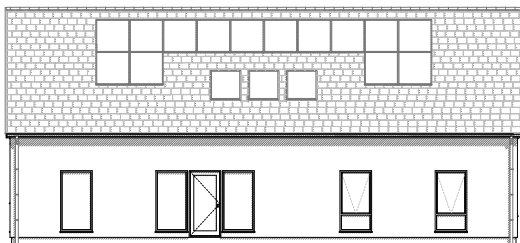
External dimensions: 10.9 m x 16.0 m

This model is one of our largest in terms of area when the attic is converted. It is also the same size, but with a different layout as our showhouse. The North entrance has an open entrance porch.

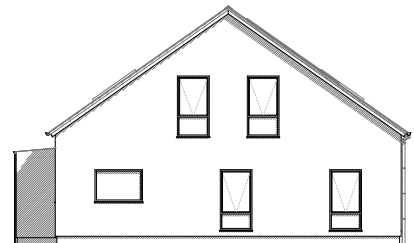
This featured design allows for 6 bedrooms.



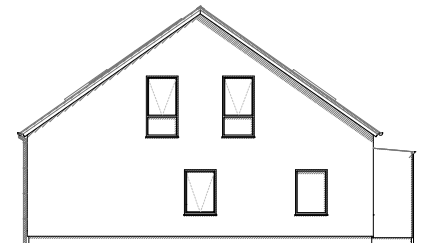
North Elevation



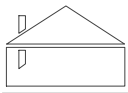
South Elevation



West Elevation



East Elevation



✓ Super Passive House

($U_{wall}=0.10$ W/m²K, $U_{roof}=0.08$ W/m²K)

202m²

(Gross Internal Area = TUFA)

Hibernia Series

drawing not to scale



Price available online, click link below:
<https://scanhome.ie/archive/pricelist/Hibernia.pdf>



Hibernia 214-30:

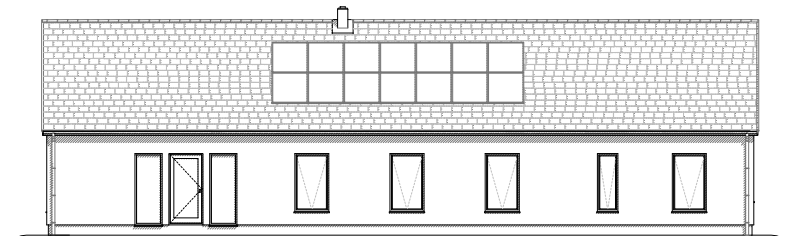
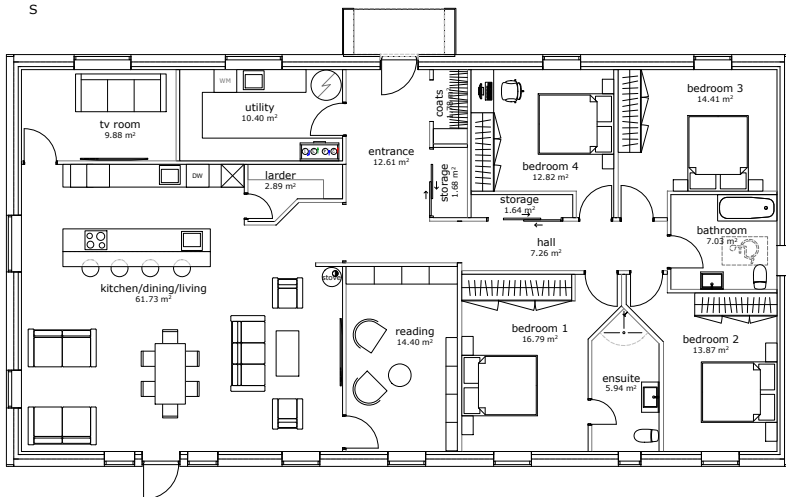
Internal dimensions: 10.3 m x 20.4 m

External dimensions: 10.9 m x 20.8 m

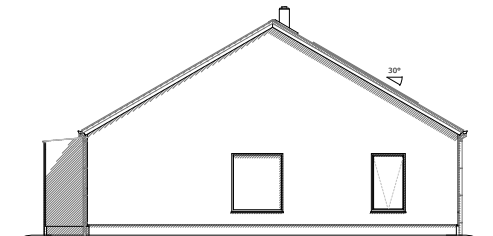
This is one of our largest single storey designs. The long body allows the living areas to be separated from the sleeping areas.

The stepped-in corner feature not only breaks up the facade, it also creates a very usable fully covered outside area.

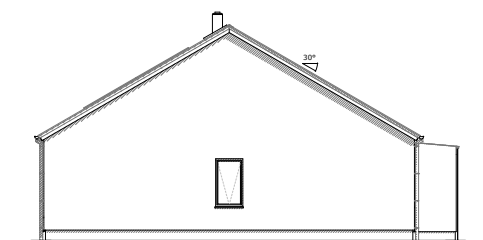
This featured design allows for 4 bedrooms, one with ensuite, a reading/play room plus a small TV room/study.



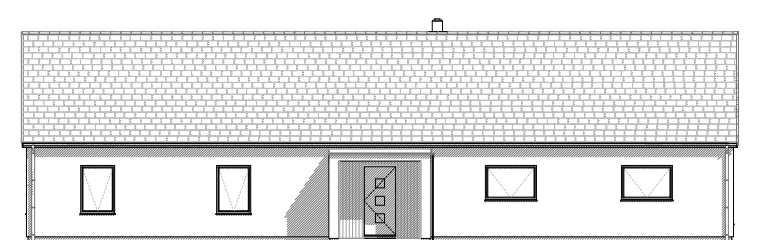
South Elevation



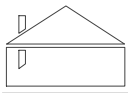
West Elevation



East Elevation



North Elevation



Passive House

($U_{wall}=0.15 \text{ W/m}^2\text{K}$, $U_{roof}=0.10 \text{ W/m}^2\text{K}$)

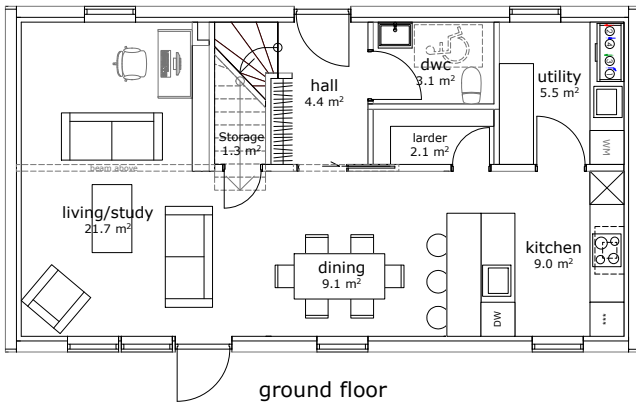
115m²

(Gross Internal Area = TUFA)

drawing not to scale



Price available online, click link below:
<https://scanhome.ie/archive/pricelist/Utklippan.pdf>



ground floor

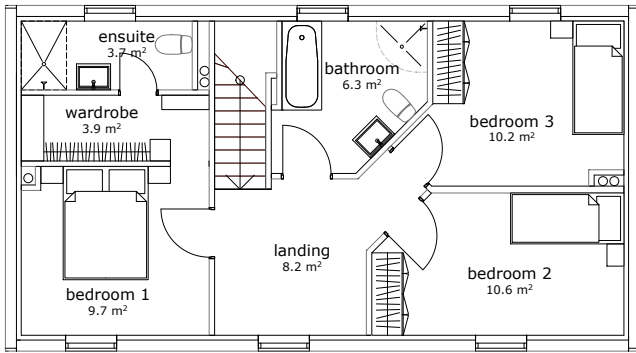
Utklippan 123-35:

Internal dimensions: 5.7 m x 10.6 m

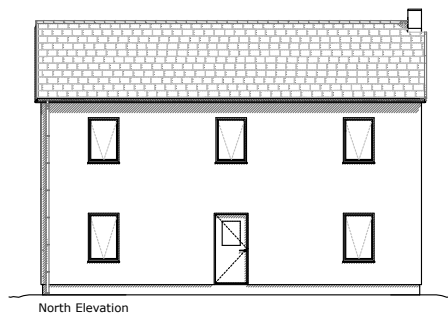
External dimensions: 6.1 m x 11.2 m

This has the same footprint as the Atlantica, only it is a full two-storey building.

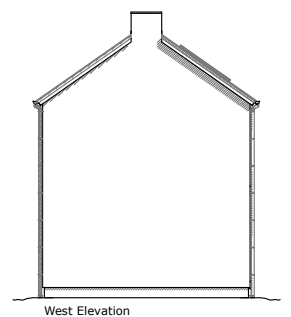
This featured design allows for 3 bedrooms, the master bedroom also has an ensuite.



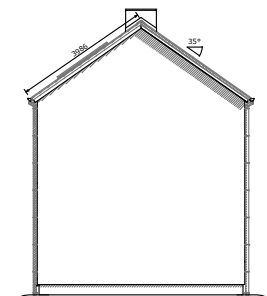
first floor



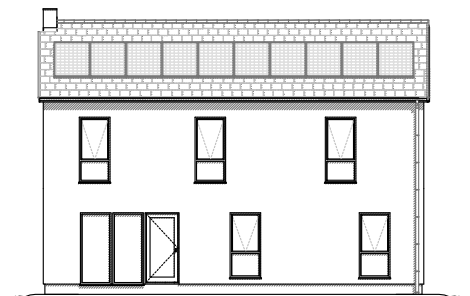
North Elevation



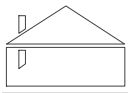
West Elevation



East Elevation



South Elevation



☑ Super Passive House

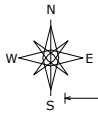
($U_{wall}=0.10 \text{ W/m}^2\text{K}$, $U_{roof}=0.08 \text{ W/m}^2\text{K}$)

148m²

(Gross Internal Area = TUFA)

Kattegatt Series

drawing not to scale



11190

Price available online, click link below:
<https://scanhome.ie/archive/pricelist/Kattegatt.pdf>



Kattegatt 162-30:

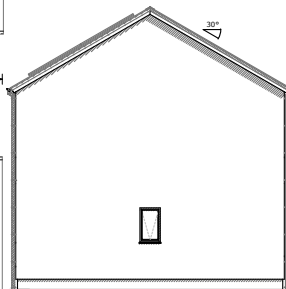
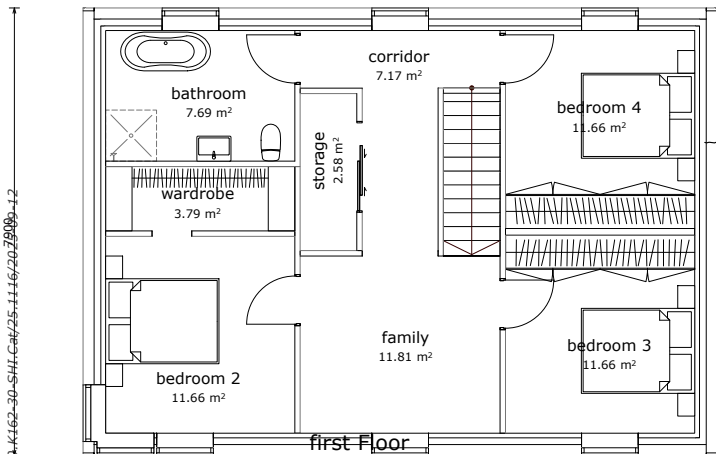
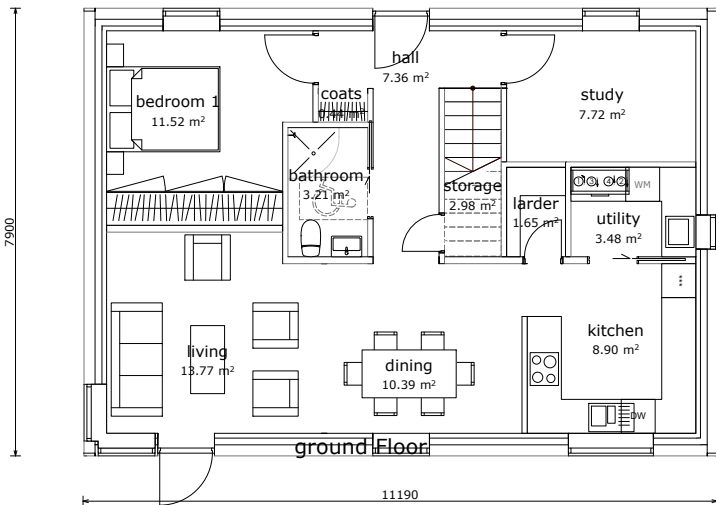
Internal dimensions: 7.1 m x 10.4 m

External dimensions: 7.9 m x 11.2 m

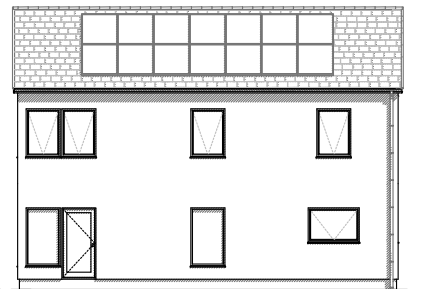
This two-storey version of a Baltica is very popular for medium sized families.

This version uses a super passive upgrade.

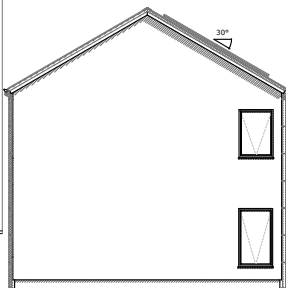
The design allows for 5 bedrooms. The master bedroom could have an ensuite and the main bathroom located in the family area.



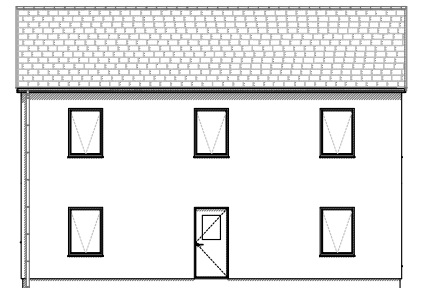
East Elevation



South Elevation

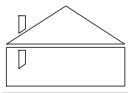


West Elevation



North Elevation

Pr. Reg: 20.510, 04-K162-30-SHI-Cat/25-1116/26/29/09-12



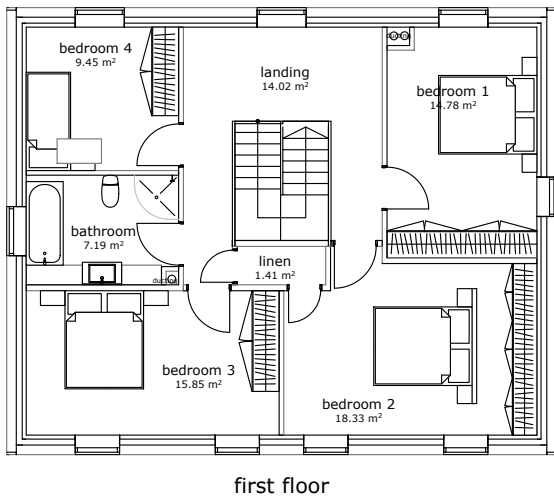
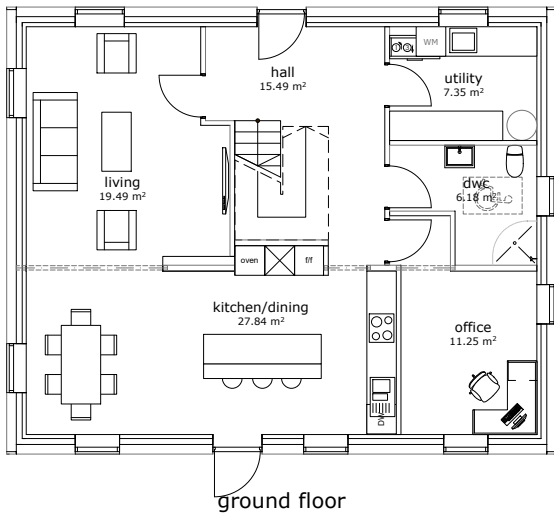
✓ Super Passive House
($U_{wall}=0.10 \text{ W/m}^2\text{K}$, $U_{roof}=0.08 \text{ W/m}^2\text{K}$)

168m²
(Gross Internal Area = TUFA)

drawing not to scale



Price available online, click link below:
<https://scanhome.ie/archive/pricelist/Skagerack.pdf>

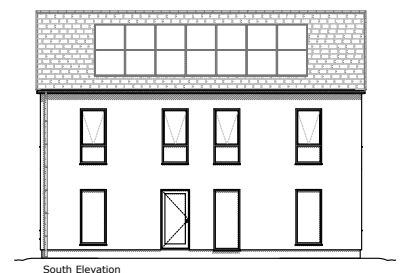
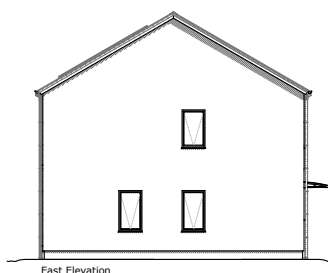
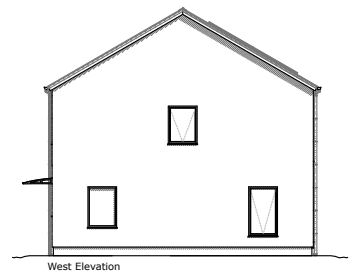
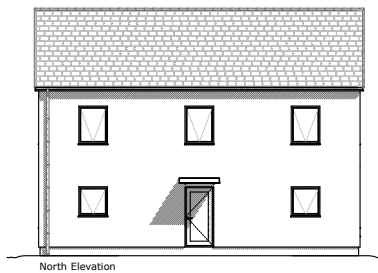


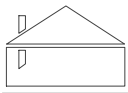
Skagerack 188-30:

Internal dimensions: 8.3 m x 14.0 m
External dimensions: 9.1 m x 14.8 m

This is our two-storey version of the Nordica. Ideal for the medium to large sized family. It offers generously sized spaces and could also benefit from the optional external open porch.

This featured design allows for 5 bedrooms, but could also be fitted with an ensuite in the master bedroom.





✓ Super Passive House

($U_{wall}=0.10 \text{ W/m}^2\text{K}$, $U_{roof}=0.08 \text{ W/m}^2\text{K}$)

210m²

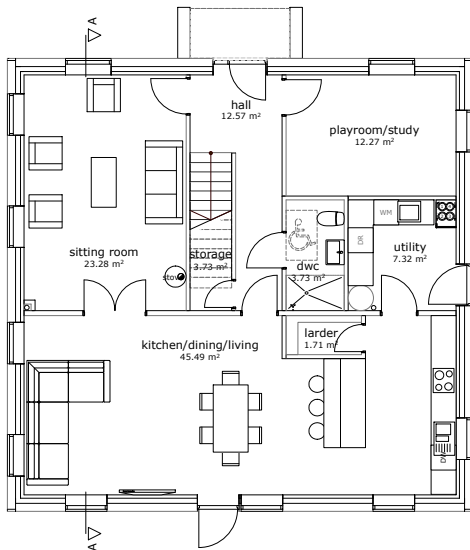
(Gross Internal Area = TUFA)

Draget Series

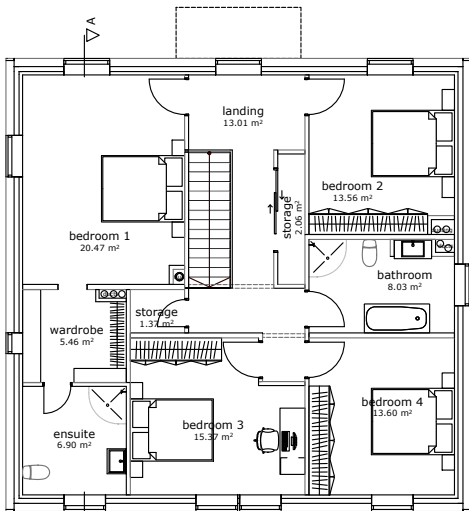
drawing not to scale



Price available online, click link below:
<https://scanhome.ie/archive/pricelist/Draget.pdf>



ground floor



first floor

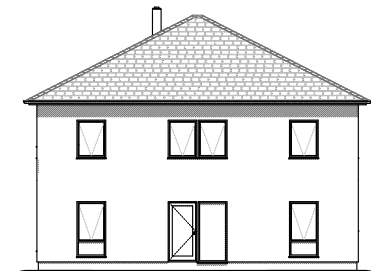
Draget 226-30:

Internal dimensions: 10.4 m x 10.1 m

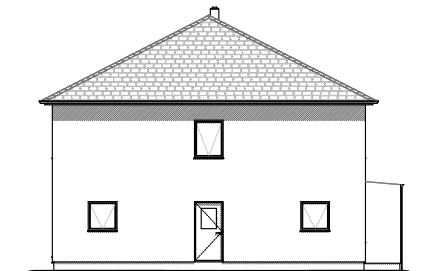
External dimensions: 11.2 m x 10.9 m

This is our two-storey version of the Hibernia. Ideal for the medium to large sized family. It offers a separate sitting room and an external open porch.

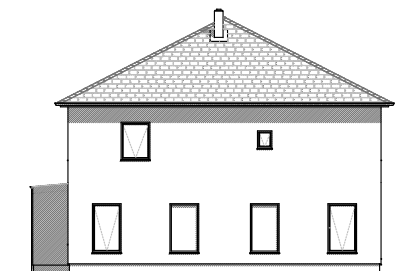
This featured design allows for 5 large bedrooms including an ensuite and walkin-wardrobe for the master bedroom.



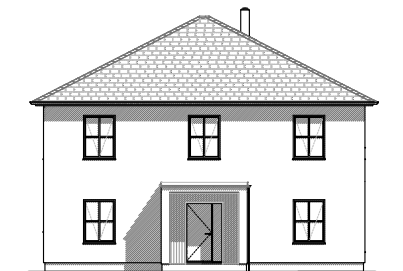
South Elevation



East Elevation



West Elevation



North Elevation